

Buyers

PRODUCTS COMPANY



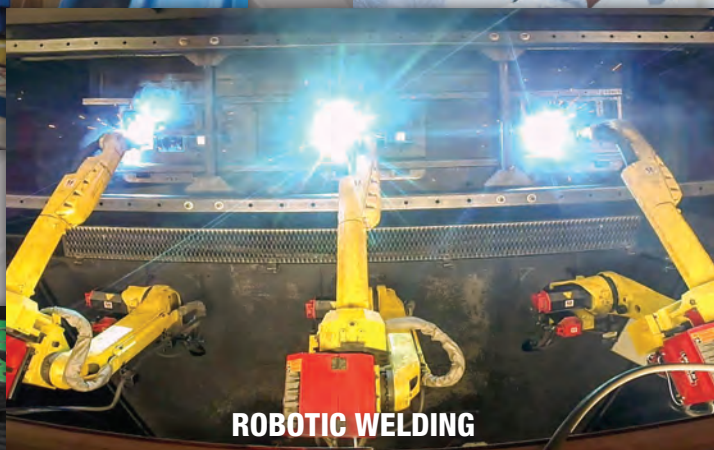
A LEADING MANUFACTURER DELIVERING QUALITY, VALUE & AVAILABILITY



ROTATIONAL MOLDING



POWDER COATING



ROBOTIC WELDING



RUBBER PROCESSING



FORGING

TOWING & CARGO | TOOLBOXES | TRUCK & TRAILER | LIGHTING | HYDRAULICS | ACCESSORIES

Our History



Our Corporate Family of Companies



Founded in 1946, Buyers Products is a fully integrated manufacturer and a leader in the truck equipment industry. Our engineering, manufacturing and assembly operations take place in the USA, under the Buyers family of companies. **Buyers Products' mission is to improve our Customers' profitability and productivity while enhancing the quality of our products and services.**



1946
Buyers Products Company founded by Sam Ruven and Bessie Kleinman as a distributor of driveline components.

1988
Buyers acquired Viking Forge in Streetsboro, Ohio with 6 complete forge lines. This facility manufactures our hitchers, D-rings, and other towing and cargo parts.

1995
Buyers acquired Progressive Powder Coating. Our Nordson automatic powder application booth is used to powder coat our Buyers toolboxes and other truck and trailer accessories.

2004
Buyers acquired Romotech in New Paris, Indiana. Our Ferry Industries Rotospeed molding machines are used to manufacture our poly salt spreaders.

2009
Buyers began our operations at Boomerang Rubber, in Botkins, Ohio manufacturing mudflaps, wheel chocks and other rubber truck and trailer accessories.



Buyers continued to grow its product offerings and build valued relationships with customers and suppliers. Increased demand for products led to the pursuit of supply chain manufacturing solutions.



1992
Buyers acquired Trailer Components Manufacturing (Tracom) for CNC precision machining and tooling, as well as state-of-the-art welding.



2002
Buyers moved its corporate headquarters to a brand new 235,000 sq. ft. state-of-the-art office and distribution center.



2007
Buyers began manufacturing the SnowDogg stainless steel snowplow at our Mentor, Ohio facility.



2013
Buyers acquired an additional 500,000 sq. ft. manufacturing facility in Mentor, Ohio allowing for expansion of our aluminum and stainless steel manufacturing.



2016
Buyers establishes a 22,000 sq ft Engineering Tech Center in Mentor, Ohio. It's multi-use lab, design, training and prototyping space is dedicated to the research and development of innovative product

TOWING

Our towing equipment is designed and created to the highest industry standards.

ALL NEW

GOOSENECK FLIP BALL HITCH PG B10

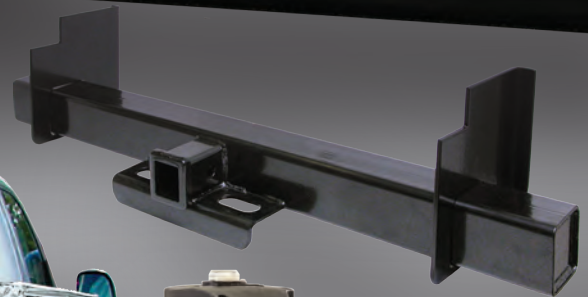
5th WHEEL WIRING HARNESS PG B11

KING PIN LOCK PG B12

DRAW BAR PG B14

HITCH PIN LOCK PG B29

**3 AXLE PROPORTIONAL
BRAKE CONTROLLER** PG B42



Ball Hitches & Pintle Hooks

6-Ton Combination Hitch



RM62516

- Single piece drop forged lower jaw is designed w/an integral shank to fit 2" receiver tubes
- Black powder coat finish
- Drawbar eye dimensions - 2-1/2" to 3" I.D. w/1-1/4" to 1-9/16" diameter section
- Individually boxed with instruction sheet & capacity decals

Part No.	Description	Ball Size	M.V.L. (lbs.)	M.G.T.W. (lbs.)	Wt. (lbs.)	Cat.
RM62000	6-Ton Receiver Mount Combination Hitch	2"	2,400	12,000	20	521 (Y)
RM62516	6-Ton Receiver Mount Combination Hitch	2-5/16"	2,400	12,000	20	521 (Y)
RM650M	6-Ton Receiver Mount Combination Hitch	50 mm	2,400	12,000	20	521 (Y)
P11C	1/4" Zinc Clip w/8" Chain for RM & BH8 Series	-	-	-	0.13	521-1 (N)
RB1780	Replacement Ball for RM6 Series & BH8 Series	1-7/8"	-	-	2.25	521-1 (N)
RB2000	Replacement Ball for RM6 Series & BH8 Series	2"	-	-	2.50	521-1 (N)
RB2516	Replacement Ball for RM6 Series & BH8 Series	2-5/16"	-	-	2.75	521-1 (N)
RB50MM	Replacement Ball for RM6 Series & BH8 Series	50 mm	-	-	2.75	521-1 (N)

5-Ton Pintle Hook



RM5P

- Single piece drop forged lower jaw is designed w/an integral shank to fit 2" receiver tubes
- Black powder coat finish
- Drawbar eye dimensions - 2" to 3" I.D. w/ 1-1/4" to 1-5/8" diameter section
- Individually boxed w/ instruction sheet and capacity decals

Part No.	Description	Ball Size	M.V.L. (lbs.)	M.G.T.W. (lbs.)	Wt. (lbs.)	Cat.
RM5P	5-Ton Receiver Mount Pintle Hook	-	2,000	10,000	14.2	525 (N)
P11C	1/4" Zinc Clip w/8" Chain for RM & BH8 Series	-	-	-	0.13	521-1 (N)

8-Ton Combination Hitch



BH82000

- Drop forged
- Black powder coat finish
- Forged steel ball
- Interchangeable hitch balls
- Drawbar eye dimensions - 2-1/2" to 3" I.D. w/1-1/4" to 1-9/16" diameter section
- Individually boxed w/drilling template & capacity decals.
- M.G.T.W: 16,000 as pintle/12,000 as 1-7/8" or 2" ball mount, 16,000 as 2-5/16" ball mount

Part No.	Description	Mounting Pattern (Center to Center)		Fastener Size	Ball Size	M.V.L. (lbs.)	M.G.T.W. (lbs.)	Wt. (lbs.)	Cat.
		Vertical	Horizontal						
BH81780	8-Ton Combination Hitch	1.75	3.38	1/2"	1-7/8"	3,000	12,000	13	521 (Y)
10045	8-Ton Combination Hitch w/Mounting Kit, Packaged	1.75	3.38	1/2"	1-7/8"	3,000	12,000	13.8	521 (Y)
BH82000	8-Ton Combination Hitch	1.75	3.38	1/2"	2"	3,000	12,000	13	521 (Y)
10050	8-Ton Combination Hitch w/Mounting Kit, Packaged	1.75	3.38	1/2"	2"	3,000	12,000	13.8	521 (Y)
BH82516	8-Ton Combination Hitch	1.75	3.38	1/2"	2-5/16"	3,000	16,000	13	521 (Y)
10055	8-Ton Combination Hitch w/Mounting Kit, Packaged	1.75	3.38	1/2"	2-5/16"	3,000	16,000	13.8	521 (Y)
BH850MM	8-Ton Combination Hitch	1.75	3.38	1/2"	50 mm	3,000	16,000	13	521 (Y)
P11C	1/4" Zinc Clip w/8" Chain for RM & BH8 Series	-	-	-	-	-	-	0.13	521-1 (N)
RB1780	Replacement Ball for RM6 Series & BH8 Series	-	-	-	1-7/8"	-	-	2.25	521-1 (N)
RB2000	Replacement Ball for RM6 Series & BH8 Series	-	-	-	2"	-	-	2.5	521-1 (N)
RB2516	Replacement Ball for RM6 Series & BH8 Series	-	-	-	2-5/16"	-	-	2.75	521-1 (N)
RB50MM	Replacement Ball for RM6 Series & BH8 Series	-	-	-	50 mm	-	-	2.75	521-1 (N)
8520	Mounting Kit: (4) 1/2" x 2" long Gr. 8 cap screws; (4) 1/2" Gr. 8 hex nuts; (4) 1/2" heavy lock washers; (4) 1/2" flat washers	-	-	-	-	-	-	0.75	525-1 (N)

10-Ton Combination Hitch



BH102516

- Drop forged
- Black powder coat finish
- Forged steel ball
- Interchangeable hitch balls
- Drawbar eye dimensions - 2-3/8" to 3" up to 1-9/16" diameter section
- Individually boxed w/drilling template & capacity decals
- M.G.T.W: 20,000 as pintle/20,000 as ball mount

Part No.	Description	Hole Spacing (Center to Center)		Hole Size	Ball Size	M.V.L. (lbs.)	M.G.T.W. (lbs.)	Wt. (lbs.)	Cat.
		Vertical	Horizontal						
BH102000	10-Ton Combination Hitch	1.75	3.38	9/16"	2"	4,000	20,000	19	521 (Y)
BH102516	10-Ton Combination Hitch	1.75	3.38	9/16"	2-5/16"	4,000	20,000	20	521 (Y)
10052	10-Ton Combination Hitch w/Mounting Kit, Packaged	1.75	3.38	9/16"	2"	4,000	20,000	19	521 (Y)
10057	10-Ton Combination Hitch w/Mounting Kit, Packaged	1.75	3.38	9/16"	2-5/16"	4,000	20,000	20	521 (Y)
3003316	3/8" x 2-1/4" Zinc Clip w/ 8" Chain for BH10 Series	-	-	-	-	-	-	0.13	525-1 (N)
RB102000	Replacement Ball for BH10 Series	-	-	-	2"	-	-	3.3	521-1 (N)
RB102516	Replacement Ball for BH10 Series	-	-	-	2-5/16"	-	-	4	521-1 (N)
8525	Mounting Kit: (4) 9/16" x 2 1/2" long Gr. 8 cap screws; (4) 9/16" Gr. 8 hex nuts; (4) 1/2" heavy lock washers	-	-	-	-	-	-	3	525-1 (N)

Rigid-Type Pintle Hooks

5-Ton Pintle Hook



PH5

- Drop forged steel
- Black powder coat
- Drawbar eye dimensions - 2" to 3" I.D. w/ 1-1/4" to 1-5/8" diameter section
- Individually boxed
- Include mounting info., spec. sheet, drilling template & vehicle capacity decal
- PH5 compares to Holland®* PH-T-60-AL

Part No.	Description	M.V.L. (lbs.)	M.G.T.W. (lbs.)	Mounting Pattern (Center to Center)		Fastener Size	Wt. (lbs.)	Cat.
				Vertical	Horizontal			
PH5	5-Ton Pintle Hook	2,000	10,000	1.75	3.38	1/2"	7.5	525 (N)
10035	5-Ton Pintle Hook w/Mounting Kit	2,000	10,000	1.75	3.38	1/2"	8.3	525 (N)
8520	Mounting Kit: (4) 1/2" x 2" long Gr. 8 cap screws; (4) 1/2" Gr. 8 hex nuts; (4) 1/2" heavy lock washers; (4) 1/2" flat washers	-	-	-	-	-	0.75	525-1 (N)
P11C	1/4" Zinc Clip w/8" Chain for RM & BH8 Series	-	-	-	-	-	0.13	521-1 (N)

8-Ton Pintle Hook



PH8

- Drop forged steel
- Black powder coat
- Drawbar eye dimensions - 2" to 3" I.D. w/ 1-1/4" to 1-5/8" diameter section
- Individually boxed
- Include mounting info., spec. sheet, drilling template & vehicle capacity decal

Part No.	Description	M.V.L. (lbs.)	M.G.T.W. (lbs.)	Mounting Pattern (Center to Center)		Fastener Size	Wt. (lbs.)	Cat.
				Vertical	Horizontal			
PH8	8-Ton Pintle Hook	3,200	16,000	1.75	3.38	1/2"	9	525 (N)
10038	8-Ton Pintle Hook w/Mounting Kit	3,200	16,000	1.75	3.38	1/2"	9.6	525 (N)
8520	Mounting Kit: (4) 1/2" x 2" long Gr. 8 cap screws; (4) 1/2" Gr. 8 hex nuts; (4) 1/2" heavy lock washers; (4) 1/2" flat washers	-	-	-	-	-	0.75	525-1 (N)
P11C	1/4" Zinc Clip w/8" Chain for RM & BH8 Series	-	-	-	-	-	0.13	521-1 (N)

15-Ton Pintle Hook



PH15

- Drop forged steel
- Black powder coat
- Drawbar eye dimensions - 2" to 3" I.D. w/ 1-1/4" to 1-5/8" diameter section
- Individually boxed
- Include mounting info., spec. sheet, drilling template & vehicle capacity decal
- PH15 compares to Holland®* PH-T-60-AOL-8

Part No.	Description	M.V.L. (lbs.)	M.G.T.W. (lbs.)	Hole Spacing (Center to Center)		Fastener Size	Wt. (lbs.)	Cat.
				Vertical	Horizontal			
PH15	15-Ton Pintle Hook	6,000	30,000	1.75	3.38	1/2"	11	525 (N)
10040	15-Ton Pintle Hook w/Mounting Kit	6,000	30,000	1.75	3.38	1/2"	11.8	525 (N)
8520	Mounting Kit: (4) 1/2" x 2" long Gr. 8 cap screws; (4) 1/2" Gr. 8 hex nuts; (4) 1/2" heavy lock washers; (4) 1/2" flat washers	-	-	-	-	-	0.75	525-1 (N)
3004987	Safety Pin: 1/4" Zinc Plated Safety Pin w/ Lanyard	-	-	-	-	-	1.3	525-1 (N)

20-Ton Pintle Hook



PH20

- Drop forged steel
- Black powder coat
- Drawbar eye dimensions - 2" to 3" I.D. w/ 1-1/4" to 1-5/8" diameter section
- Individually boxed
- Include mounting info., spec. sheet, drilling template & vehicle capacity decal
- PH20 compares to Wallace®* 20 TON

Part No.	Description	M.V.L. (lbs.)	M.G.T.W. (lbs.)	Hole Spacing (Center to Center)		Fastener Size	Wt. (lbs.)	Cat.
				Vertical	Horizontal			
PH20	20-Ton Pintle Hook	8,000	40,000	1.75	3.38	9/16"	13.1	525 (N)
10042	20-Ton Pintle Hook w/Mounting Kit	8,000	40,000	1.75	3.38	9/16"	13.4	525 (N)
8525	Mounting Kit: (4) 9/16" x 2 1/2" long Gr. 8 cap screws; (4) 9/16" Gr. 8 hex nuts; (4) 1/2" heavy lock washers	-	-	-	-	-	3	525-1 (N)
3004987	Safety Pin: 1/4" Zinc Plated Safety Pin w/ Lanyard	-	-	-	-	-	1.3	525-1 (N)

30-Ton Pintle Hook



PH30

- Drop forged steel
- Black powder coat
- Drawbar eye dimensions - 2" to 3" I.D. w/ 1-1/4" to 1-5/8" diameter section
- Individually boxed
- Include mounting info., spec. sheet, drilling template & vehicle capacity decal

Part No.	Description	M.V.L. (lbs.)	M.G.T.W. (lbs.)	Hole Spacing (Center to Center)		Fastener Size	Wt. (lbs.)	Cat.
				Vertical	Horizontal			
PH30	30-Ton Pintle Hook	15,000	60,000	4.50	4.50	3/4"	24	525 (N)
8530	Mounting Kit: (4) 3/4" x 3-1/2" long Gr. 8 cap screws; (4) 9/16" Gr. 8 hex nuts; (4) 1/2" heavy lock washers	-	-	-	-	-	2.8	525-1 (N)
3003316	Safety Pin: 1/4" Clear Zinc Plated Safety Pin w/ Chain	-	-	-	-	-	0.23	525 (N)

Pintle Hook Mount



PM87

- Continuous welds
- Black powder coat finish
- High & low positioning
- Solid shank (tubular shank on PM25612)
- Welded support bracket
- Accepts PH5, PH8, PH15, PH20 (requires drilling), BH8 or similar pintle hooks

Part No.	PKG. Part No.	A	B	C	Pairs of Holes	M.V.L. (lbs.)	M.G.T.W. (lbs.)	Hole Spacing (Center to Center)		Fastener Size	Wt. (lbs.)	Cat.
								Vertical	Horizontal			
PM84		9"	2"	3.75"	2	4,000	20,000	1.75	3.38	1/2"	12	544 (N)
PM87	10033	9"	2"	7.38"	4	2,800	14,000*	1.75	3.38	1/2"	15	544 (N)
PM105		10.25"	2"	5.75"	3	3,000	15,000	1.75	3.38	1/2"	16	544 (N)
PM107		10.25"	2"	7.38"	4	2,600	13,000*	1.75	3.38	1/2"	17	544 (N)
PM812	10032	12.25"	2"	12.50"	7	2,000	10,000	1.75	3.38	1/2"	24	544 (N)
PM1012		14.5"	2"	12.50"	7	2,000	10,000	1.75	3.38	1/2"	26	544 (N)
PM25612		12"	2.5"	6.13"	3	3,200	16,000	1.75	3.38	1/2"	12	544 (N)

* New higher capacity

Rigid-Type Pintle Hooks

45-Ton Pintle Hook



- Austempered ductile iron
- Drawbar eye dimensions - 2-3/8" to 3" I.D. w/ 1-1/4" to 1-5/8" diameter section
- Black powder coat finish
- Individually boxed
- Include mounting information, spec. sheet, drilling template & vehicle capacity decal
- PH45 compares to Premier®* Model 580

Part No.	Description	M.V.L. (lbs.)	M.G.T.W. (lbs.)	Hole Spacing (Center to Center)		Fastener Size	Wt. (lbs.)	Cat.
				Vertical	Horizontal			
PH45	45-Ton Pintle Hook	18,000	90,000	3.00	5.25/6.50	3/4"	23	525 (N)
8530	Mounting Kit: (4) 3/4" x 3-1/2" long Gr. 8 cap screws; (4) 3/4" Gr. 8 hex nuts; (4) 3/4" heavy lock washers)	-	-	-	-	-	2.8	525-1 (N)

All hole spacing listed in descending order

45-Ton Air Compensated Pintle Hook



PH45AC4



PH45AC4BK

- 4-Hole mount
- Double-safe locking system w/a lock/clasp/impact arm interacting design that combine to prevent release of the eye when air pressure is applied
- Must be used with a brake chamber
- The air brake chamber is constructed to interact w/the closed clasp to prevent uncoupling when air is applied
- To be used with a lunette eye having an internal diameter between 2-3/8" & 3", & a material cross section between 1-1/4" & 1-3/4" in diameter

Part No.	Description	M.V.L. (lbs.)	M.G.T.W. (lbs.)	Hole Spacing (Center to Center)		Fastener Size	Wt. (lbs.)	Cat.
				Vertical	Horizontal			
P45AC4	45-Ton Air Compensated Pintle Hook	18,000	90,000	3.00	5.25/6.50	3/4"	26	525 (N)
P45AC4K	Includes Pintle Hook, Brake Chamber & Bracket	18,000	90,000	3.00	5.25/6.50	3/4"	38.4	525 (N)
P45AC4BK	Brake Chamber Bracket for P45AC4	-	-	-	-	-	3.2	525-1 (N)
3018091	Brake Chamber, Type 24	-	-	-	-	-	9.2	525-1 (N)

All hole spacing listed in descending order

45-Ton Air Compensated Pintle Hook



PH45AC6



PH45AC6BK

- 6-Hole mount
- Double-safe locking system w/a lock/clasp/impact arm interacting design that combine to prevent release of the eye when air pressure is applied
- Must be used with a brake chamber
- The air brake chamber is constructed to interact with the closed clasp to prevent uncoupling when air is applied
- To be used with a lunette eye having an internal diameter between 2-3/8" & 2-5/8" & a material cross section between 15/8" & 1-3/4" in diameter

Part No.	Description	M.V.L. (lbs.)	M.G.T.W. (lbs.)	Hole Spacing (Center to Center)		Fastener Size	Wt. (lbs.)	Cat.
				Vertical	Horizontal			
P45AC6	45-Ton Air Compensated Pintle Hook	18,000	90,000	2.38/2.13	5.00	3/4"	29.6	525 (N)
P45AC6K	Includes Pintle Hook, Brake Chamber & Bracket	18,000	90,000	2.38/2.13	5.00	3/4"	42	525 (N)
P45AC6BK	Brake Chamber Bracket for P45AC6	-	-	-	-	-	3.2	525-1 (N)
3018091	Brake Chamber, Type 24	-	-	-	-	-	9.2	525-1 (N)

All hole spacing listed in descending order

50-Ton Air Compensated Pintle Hook



PH50AC shown w/Air Chamber & Plunger

- Can be utilized with or without the air chamber & plunger
- Plunger provides minimum clearance w/shock absorption
- Drawbar eye dimensions: 2-3/8" to 3" I.D. w/ 1-1/4" to 1-5/8" dia. cross section
- Black powder coat finish
- Reduce capacity by 25% for off road applications & use w/swivel type trailer drawbar
- PH50 compares to: Wallace® R50-8 & Holland® PH410

Part No.	Description	M.V.L. (lbs.)	M.G.T.W. (lbs.)	Hole Spacing (Center to Center)		Fastener Size	Wt. (lbs.)	Cat.
				Vertical	Horizontal			
PH50	50-Ton Pintle Hook	20,000	100,000	2.38/2.13	5.00	3/4"	28.9	525 (N)
PH50AC	50-Ton Pintle Hook w/Air Chamber & Plunger	20,000	100,000	2.38/2.13	5.00	3/4"	44.8	525 (N)

All hole spacing listed in descending order

50-Ton Air Compensated Pintle Hook



PH55

- Can be utilized with or without the air chamber & plunger
- Plunger provides minimum clearance w/shock absorption
- Drawbar eye dimensions: 2-3/8" to 3" I.D. w/ 1-1/4" to 1-5/8" dia. cross section
- Black powder coat finish
- Reduce capacity by 25% for off road applications & use w/swivel type trailer drawbar
- PH55 compares to: Wallace® R50-8 & Holland® PH400

Part No.	Description	M.V.L. (lbs.)	M.G.T.W. (lbs.)	Hole Spacing (Center to Center)		Fastener Size	Wt. (lbs.)	Cat.
				Vertical	Horizontal			
PH55	50-Ton Pintle Hook	20,000	100,000	*see below	5.00	3/4"	38.6	525 (N)
PH55AC	50-Ton Pintle Hook w/Air Chamber & Plunger	20,000	100,000	*see below	5.00	3/4"	54.5	525 (N)

All hole spacing listed in descending order. PH55 family hole spacing 1.06/1.06/2.38/4.25

Chamber & Plug Kit



PH50ACMK

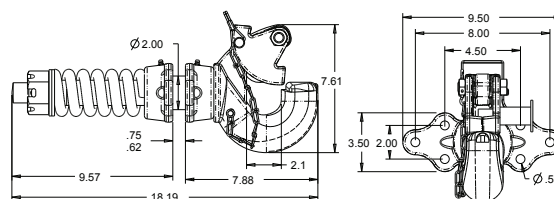
Part No.	Description	Wt. (lbs.)	Cat.
PH50ACMK	Chamber & Plunger Kit for PH50 & PH55	15.9	525 (N)
3018091	Brake Chamber, Type 24 for PH50ACMK	9.2	525-1 (N)

Swivel-Type Pintle Hooks

15-Ton Pintle Hook



- Spring cushion
- Swivel action provides torsional relief of the coupling
- Recommended for off-road applications (capacities reduced by 25%)
- Drawbar eye dimensions - 2-3/8" to 3" I.D. w/ 1-1/4" to 1-5/8" diameter section
- Pintle Hooks are individually boxed & include mounting information, spec. sheet, drilling template & vehicle capacity decal
- Compares to Holland®* PH-T-100A

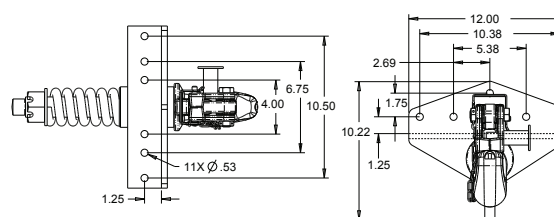


Part No.	Description	M.V.L. (lbs.)	M.G.T.W. (lbs.)	Hole Spacing (Center to Center)		Fastener Size	Wt. (lbs.)	Cat.
				Vertical	Horizontal			
BP100A	15-Ton Forged Swivel-Type	6,000	30,000	2.00	4.50/8.00	1/2"	37	525 (N)
8620	Mounting Kit: Six 1/2" x 2-1/2" long Gr. 8 cap screws; Six 1/2" Gr. 8 hex nuts; Six 1/2" heavy lock washers						1.3	525-1 (N)

15-Ton Pintle Hook



- Spring cushion
- Swivel action provides torsional relief of the coupling
- Recommended for off-road applications (capacities reduced by 25%)
- Drawbar eye dimensions - 2-3/8" to 3" I.D. w/ 1-1/4" to 1-5/8" diameter section
- Pintle Hooks are individually boxed & include mounting information, spec. sheet, drilling template & vehicle capacity decal
- Compares to Holland®* PH-T-125A

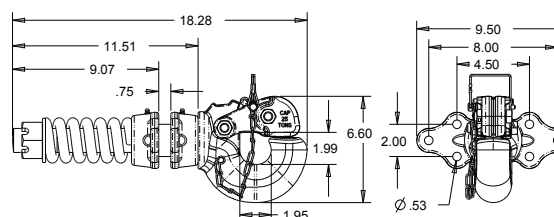


Part No.	Description	M.V.L. (lbs.)	M.G.T.W. (lbs.)	Hole Spacing (Center to Center)		Fastener Size	Wt. (lbs.)	Cat.
				Vertical	Horizontal			
BP125A	15-Ton Forged Swivel-Type	6,000	30,000	1.75	5.38/10.38	1/2"	37	525 (N)

25-Ton Pintle Hook



- Spring cushion
- Swivel action provides torsional relief of the coupling
- Recommended for off-road applications (capacities reduced by 25%)
- Drawbar eye dimensions - 2-3/8" to 3" I.D. w/ 1-1/4" to 1-5/8" diameter section
- Pintle Hooks are individually boxed & include mounting information, spec. sheet, drilling template & vehicle capacity decal
- BP200 compares to Wallace®* 25-TON

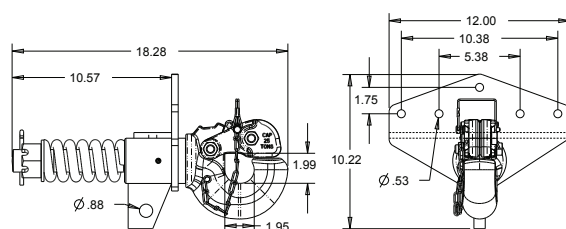


Part No.	Description	M.V.L. (lbs.)	M.G.T.W. (lbs.)	Hole Spacing (Center to Center)		Fastener Size	Wt. (lbs.)	Cat.
				Vertical	Horizontal			
BP200	25-Ton Forged Swivel-Type	6,000	50,000	2.00	4.50/8.00	1/2"	38.0	525 (N)
8620	Mounting Kit: Six 1/2" x 2-1/2" long Gr. 8 cap screws; Six 1/2" Gr. 8 hex nuts; Six 1/2" heavy lock washers						1.3	525-1 (N)

25-Ton Pintle Hook



- Spring cushion
- Swivel action provides torsional relief of the coupling
- Recommended for off-road applications (capacities reduced by 25%)
- Drawbar eye dimensions - 2-3/8" to 3" I.D. w/ 1-1/4" to 1-5/8" diameter section
- Pintle Hooks are individually boxed & include mounting information, spec. sheet, drilling template & vehicle capacity decal
- BP225 compares to Wallace® 25-TON

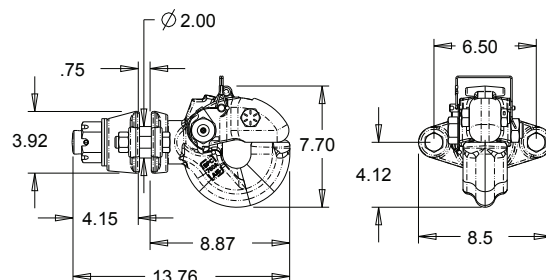


Part No.	Description	M.V.L. (lbs.)	M.G.T.W. (lbs.)	Hole Spacing (Center to Center)		Fastener Size	Wt. (lbs.)	Cat.
				Vertical	Horizontal			
BP225	25-Ton Forged Swivel-Type	6,000	50,000	1.75	5.38/10.38	1/2"	47.0	525 (N)
8620	Mounting Kit: Six 1/2" x 2-1/2" long Gr. 8 cap screws; Six 1/2" Gr. 8 hex nuts; Six 1/2" heavy lock washers						1.3	525-1 (N)

30-Ton Heavy-Duty Pintle Hook



- Swivel action provides torsional relief of the coupling
- Drawbar eye dimensions - 3" to 3" I.D. with 1-5/8" diameter section
- Pintle hooks are individually boxed & include mounting information, spec. sheet, drilling template & vehicle capacity decal

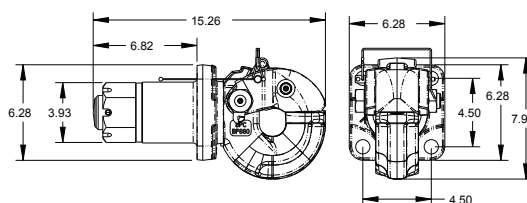


Part No.	Description	M.V.L. (lbs.)	M.G.T.W. (lbs.)	Hole Spacing (Center to Center)		Fastener Size	Wt. (lbs.)	Cat.
				Vertical	Horizontal			
BP760A	30-Ton Forged Swivel-Type	12,000	60,000	-	6.50	3/4"	38.3	525 (N)
3006875	1/4" Zinc Plated Safety Pin w/ Lanyard						0.15	525-1 (N)

50-Ton Heavy-Duty Pintle Hook



- Swivel action provides torsional relief of the coupling
- Drawbar eye dimensions - 3" ID w/ 1-5/8" diameter cross section
- Heavy-duty forged construction
- Black powder coat finish
- Easily accessible grease fitting
- Compares to Holland® PH-775SL11 & PH-775-01552; Wallace® B50 (2051108)



Part No.	Description	M.V.L. (lbs.)	M.G.T.W. (lbs.)	Hole Spacing (Center to Center)		Fastener Size	Wt. (lbs.)	Cat.
				Vertical	Horizontal			
BP880	50-Ton Forged Swivel-Type	20,000	100,000	4.50	4.50	7/8"	62	525 (N)

Gooseneck Hitches

Gooseneck Flip Ball Hitch



- 2-5/16" hitch ball
- 30,000 lbs. M.G.T.W.
- Includes vehicle specific mount (not shown)
- Underbed design
- Requires 4" hole in bed for flip ball

Part No.	Year/Model	Truck Mountings/Description	M.V.L. (lbs.)	M.G.T.W. (lbs.)	Wt. (lbs.)	Cat.
5613100	GM 2001-2010 GM 2007-2010	2500HD Long/Short Bed (1 Crossmember) 3500 Long/Short Bed (1 Crossmember)	7,500	30,000	110.6	561 (N)
NEW 5613101A	GM 2011-2016+	2500HD/3500 Long/Short Bed	7,500	30,000	119.95	561 (N)
5613200	Ford 1999-2010	F250/F350 Long/Short Bed	7,500	30,000	98	561 (N)
5613201	Ford 2011-2016	F250/F350 Long/Short Bed	7,500	30,000	92	561 (N)
5613300	Dodge 2003-2009 Dodge 2010-2012	2500/3500 Long/Short Bed, Gas/Diesel 2500/3500 Long/Short Bed, Diesel ONLY	7,500	30,000	111	561 (N)
5613301	Dodge 2006-2012 Dodge 2010-2012	1500/2500/3500 Megacab, Gas/Diesel 2500/3500 Long/Short Bed, Gas ONLY	7,500	30,000	122	561 (N)
5613302	Dodge 2013	2500 Long/Short Bed, Diesel ONLY	7,500	30,000	106.3	561 (N)
5613303	Dodge 2013-2016+	3500 Long/Short Bed, AHU Option	7,500	30,000	49	561 (N)
5613304	Dodge 2016+	2500 Long/Short Bed w/Coil Springs, AHU Option	7,500	30,000	59.5	561 (N)

Fabricators Kit for Flat-beds



- 2-5/16" towing ball zinc plated, yellow
- Flush mount, weld-on ball socket

Part No.	Description	M.V.L. (lbs.)	M.G.T.W. (lbs.)	Wt. (lbs.)	Cat.
5613500	Flat Bed Kit 2-5/16" Hitch Ball	7,500	30,000	25	561 (N)

Gooseneck Extendor



3018195



5611400

- 2-5/16" towing balls
- Zinc plated, yellow

Part No.	Description	M.V.L. (lbs.)	M.G.T.W. (lbs.)	Wt. (lbs.)	Cat.
3018195	2-5/16" Hitch Ball	5,000	25,000	8.4	561 (N)
5611400	2-5/16" Hitch Ball Extendor (4" Offset)	5,000	20,000	17.5	561 (N)

Gooseneck Hitch Plate



3014981

- 42"L x 13.5"T x 3/8" thick steel plate construction
- Black powder coated for corrosion resistance

Part No.	Description	M.V.L. (lbs.)	M.G.T.W. (lbs.)	Wt. (lbs.)	Cat.
G9542	Hitch Plate w/ 2-5/16" Hitch Ball without D-Rings	5,000	25,000	56.0	546 (N)
3014981	Hitch Plate w/ 2-5/16" Hitch Ball & D-Rings	5,000	25,000	71.2	546 (N)

Gooseneck Retractable Ball Hitch



G9003

- 360° locking collar secures the 2-5/16" towing ball when in the open position
- When in the closed position, the towing ball folds away & the locking collar secures flush

Part No.	PKG. Part No.	Description	M.V.L. (lbs.)	M.G.T.W. (lbs.)	Wt. (lbs.)	Cat.
G9003		Gooseneck Retractable Ball Hitch	5,000	25,000	34	546 (N)
G9003UBK	10070	Gooseneck Retractable Ball Hitch w/U-Bolt Kit	5,000	25,000	36.4	546 (N)
BRB03		Safety Chain U-Bolt Kit for G9003 Series	5,000	25,000	2.3	546 (N)

5th Wheel Wiring Harness



- Flat pins
- Plastic housing
- Vehicle end
- OEM style rear connector
- Built-in connection latch

Part No.	Description	Wt. (lbs.)	Cat.
TC1772P	10' OEM to 7-Way Trailer Connector Harness	2.88	542 (N)

King Pins, Fifth Wheel Hitches & King Pin Locks

Trailer King Pins



KP20025



BKPT809B

- Forged from AISI 8630 steel & heat treated to create & maintain a hardness of 302-363 BHN.
- Weldable
- 150,000 P.S.I. in ultimate strength
- Made in USA

Part No.	Description	Bolster Plate Thickness	Bolster Plate Hole Thickness	Wt. (lbs.)	Cat.
KP20025	2" Forged SAE King Pin	.25"	3"	13.03	535 (Y)
KP20031	2" Forged SAE King Pin	.31"	3"	12.95	535 (Y)
KP20038	2" Forged SAE King Pin	.38"	3"	13	535 (Y)
KP20050	2" Forged SAE King Pin	.50"	3"	13.2	535 (Y)
BKPT809B	2" Forged, Bolt-on w/8 Holes	.50"	3"	12.88	535 (Y)

NEW

Fifth Wheel Disks & Clip



FWD24



FWRC

- Durable poly disk w/steel retention clip provides constant lubrication
- Sold in boxes of 5 only
- Eliminates the need for 5th wheel plate grease & time consuming cleaning
- Large surface area provides extra towing protection

Part No.	Description	Wt. (lbs.)	Cat.
FWD24	Fifth Wheel Disk (24" x .185" thick) w/ steel clip	4.25	546 (N)
FWD32	Fifth Wheel Disk (32" x .185" thick) w/ steel clip	5.11	546 (N)
FWD36	Fifth Wheel Disk (36" x .185" thick) w/ steel clip	6.51	546 (N)
FWRC	Fifth Wheel Steel Retention Clip	0.11	546 (N)

King Pin Lock



- Cast Steel Construction
- Quick Assembly/Disassembly
- Keyed alike

NEW

Part No.	Description	Wt. (lbs.)	Cat.
KPL200	2" King Pin Lock	4.17	535 (Y)

King Pin Lock



- Cast Steel Construction
- Cast hardened lock bolt
- Quick Assembly/Disassembly
- Theft deterrent
- Oversized housing & warning lanyard prevent inadvertent coupling
- Safety orange powder coat finish
- Keyed alike

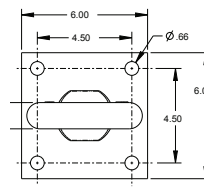
NEW

Part No.	Description	Dia.	Height	Wt. (lbs.)	Cat.
KPL300	2" King Pin Lock, Heavy-Duty	6.3"	3.33"	4.17	535 (Y)

4-Bolt Mount Drawbar



- Alloy steel forging
- Black powder coat finish
- Welded construction
- 4-1/2" Square hole pattern



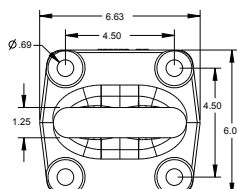
Part No.	Description	I.D. Eye	O.D. Eye	Section Drawbar	M.V.L. (lbs.)	M.G.T.W. (lbs.)	Mounting Pattern (Center to Center)		Fastener Size	Wt. (lbs.)	Cat.
							Vertical	Horizontal			
BDB125015W	Welded 4-Bolt Mount	2-1/2"	5-1/2"	1-1/2"	7,000	42,000	4.50	4.50	5/8"	14.0	527 (N)

Forged 4-Bolt Mount Drawbar

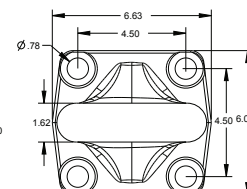


BDB1385

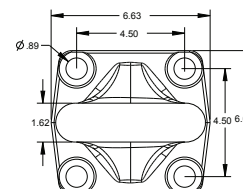
- One piece forged design for safety & capacity
- Alloy steel forging
- Black powder coat finish
- 4 hole square mounting plate



BDB125015



BDB185/ BDB185 0Z



BDB1394

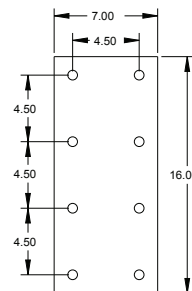
Part No.	PKG. Part No.	Description	I.D. Eye	O.D. Eye	Section Drawbar	M.V.L. (lbs.)	M.G.T.W. (lbs.)	Mounting Pattern (Center to Center)		Fastener Size	Wt. (lbs.)	Cat.
								Vertical	Horizontal			
BDB125015	10060	Forged 4-Bolt Mount	2-1/2"	5-1/2"	1-1/4" x 1-1/2"	7,000	42,000	4.50	4.50	5/8"	17.1	527 (N)
BDB1385		Heavy-Duty Forged 4-Bolt Mount	3"	6.24"	1-5/8"	15,000	60,000*	4.50	4.50	3/4"	20	527 (N)
BDB13850Z		Heavy-Duty Forged 4-Bolt Mount Zinc plated, clear	3"	6.24"	1-5/8"	15,000	60,000*	4.50	4.50	3/4"	20	527 (N)
BDB1394		Heavy-Duty Forged 4-Bolt Mount	3"	6.24"	1-5/8"	19,000	90,000	4.50	4.50	7/8"	20	527 (N)

*90,000 lb. capacity for hinged tongue trailers where there is a negligible tongue load (500 lbs. max)

Trailer Nose Plate



- Accepts standard 4-1/2" square bolt pattern found on most drawbars
- 3 mounting positions
- TNP716625750 is used w/ BDB125015 and similar drawbars
- TNP716750100 is used w/ BDB1385 and similar drawbars



Part No.	Description	Mounting Pattern (Center to Center)		Fastener Size	Wt. (lbs.)	Cat.
		Vertical	Horizontal			
TNP716625750	Trailer Nose Plate (3/4" thick)	4.50	4.50	5/8"	24	527 (N)
TNP716750100	Trailer Nose Plate (1" thick)	4.50	4.50	3/4"	32	527 (N)

Forged Lunette Eye



- Forged steel

Part No.	Description	I.D. Eye	O.D. Eye	Section Drawbar	Wt. (lbs.)	Cat.
LW625	Forged Lunette Eye	3"	5"	1"	2.9	527 (N)
LW847	Forged Lunette Eye	3"	6-1/4"	1-5/8"	9	527 (N)



Available in Retail Package



Drawbars

Weld-On Forged Steel Drawbar



- Forged C1020 steel
- Welds onto trailer tongue

Part No.	Description	I.D. Eye	O.D. Eye	Section Drawbar	M.V.L. (lbs.)	M.G.T.W. (lbs.)	Wt. (lbs.)	Cat.
LW10	Forged Steel	2-1/2"	4-1/2"	1"	1,000	10,000	4	527 (N)
NEW LW20	Forged Steel	3"	6-1/4"	3-3/8 x 1-1/4"	4,000	20,000	12.52	527 (N)

Bolt-On Forged Steel Drawbar



- Bolt on drawbar

Part No.	Description	I.D. Eye	O.D. Eye	Section Drawbar	M.V.L. (lbs.)	M.G.T.W. (lbs.)	Wt. (lbs.)	Cat.
BDB12281	Forged Steel	2-1/2"	5-1/2"	1-1/4" x 1-1/2"	4,000	20,000	20.25	527 (N)
BDB1235	Forged Steel	3"	6-1/4"	1-5/8"	7,000	35,000	42	527 (N)
BDB1238	Forged Alloy Steel	3"	6-1/4"	1-5/8"	4,500	22,000	27	527 (N)
BDB1245	Forged Steel	2.38"	5.64"	1-5/8"	8,000	40,000	42	527 (N)

Forged Alloy Steel Drawbar w/ Nut



- Alloy steel forging
- Includes nut, cotter pin, and washer

Part No.	Description	I.D. Eye	O.D. Eye	Section Drawbar	M.V.L. (lbs.)	M.G.T.W. (lbs.)	Wt. (lbs.)	Cat.
BDB12503	1.5-12 x 2.12	2-1/2"	5-1/2"	1-1/4" x 1-1/2"	3,000	15,000	9	527 (N)
BDB12492H	2-4.5 x 2.5	3"	6-1/4"	1-5/8"	9,000	45,000	16	527 (N)

Drawbar Lock & Gauge



- Zinc Plated
- Fits all 2-1/2" - 3" lunette eyes
- 2-1/32" hole accept most 1/2" dia. padlocks
- Shown w/drawbar & lock (not included)

Part No.	Description	Wt. (lbs.)	Cat.
BDL253	Drawbar Lock	3.5	527 (N)
3013872	Drawbar Wear Gauge	0.98	543 (N)

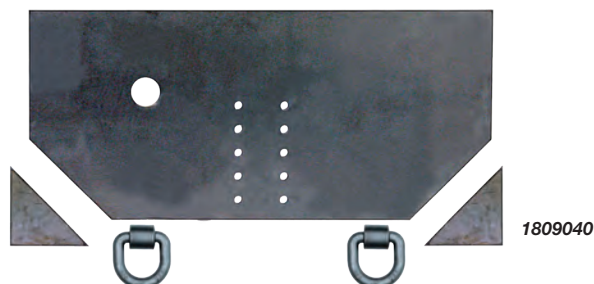
Hitch Plate



- Fits Ford F350, F450, F550, Chevy/GMC 3500, 4500 & 5500 Chassis Cabs & Dodge/RAM 3500
- Includes two 5/8" forged D-rings w/brackets
- Multiple pintle hook mounting positions
- Pre-punched hole fits multiple trailer connectors
- Black powder coat finish
- Includes ICC bumper protection

Part No.	Description	Application	M.G.T.W. (lbs.)	Wt. (lbs.)	Cat.
1809030A	1/2" x 15.5" H	Ford F350, F450, F550, 1999+	15,000	104	551 (Y)
1809035	1/2" x 15.5" H	Chevy/GMC 3500	15,000	90	551 (Y)
1809036	1/2" x 17" H	Chevy/GMC 3500 w/Bottom Bumper	20,000	107	551 (Y)
1809037	1/2" x 15" H	Dodge/RAM 3500, 4500, 5500	14,000	108	551 (Y)
1809038	1/2" x 17.125" H	Chevy/GMC 4500/5500	15,000	107	551 (Y)
1809039	1/2" x 22" H	Chevy/GMC 4500/5500, 4x4	15,000	131	551 (Y)

Fabricators Hitch Plate



- 1/2", 5/8" or 3/4" hitch plate
- Multiple pintle hook mounting positions
- Pre-punched hole fits multiple trailer connectors
- Includes two 5/8" forged D-rings w/brackets on the 1/2" model and two 1" forged D-rings on the 5/8" and 3/4" models
- Includes two weld-on gussets

Part No.	Description	M.G.T.W. (lbs.)	Wt. (lbs.)	Cat.
1809040	1/2" x 34" W x 15.5" H, Fabricators	Not Rated	71	551 (Y)
1809042	5/8" x 34" W x 15.5" H, Fabricators	Not Rated	93	551 (Y)
1809043	5/8" x 34.5" W x 22.5" H, Fabricators	Not Rated	131	551 (Y)
NEW 1809027A	3/4" x 34.5" W x 25.5" H, Fabricators	Not Rated	168.2	551 (Y)

Hitch Plate w/Receiver Tube



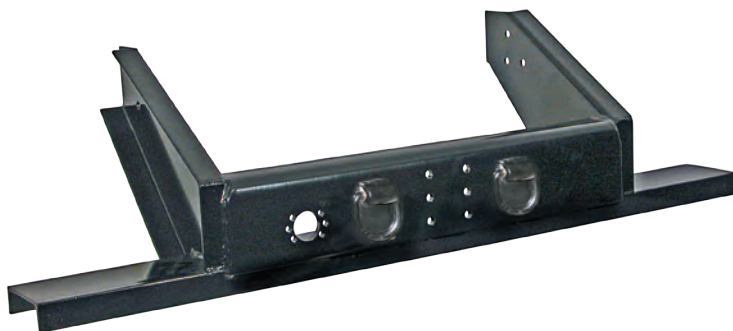
- Fits Ford, Chevy/GMC & Dodge/RAM
- Two 5/8" forged D-rings w/brackets
- 2" or 2-1/2" receiver tube
- Pre-punched hole fits multiple electrical adaptors
- Black powder coat finish
- Includes ICC bumper protection

Part No.	Description	Application	Receiver Tube	M.G.T.W. (lbs.)	Wt. (lbs.)	Cat.
1809060A	1/2" x 17.42" H	Ford F350, F450, F550	2"	20,000	123	551 (Y)
1809061A	1/2" x 17.42" H	Ford F350, F450, F550	2-1/2"	20,000	124	551 (Y)
1809065	1/2" x 16.91" H	Chevy/GMC 3500	2"	20,000	111	551 (Y)
1809067	1/2" x 17.64" H	Dodge/RAM 3500, 4500, 5500	2"	20,000	127	551 (Y)

Please consult vehicle/chassis owner's manual prior to installation.
 Take all safety precautions to protect the electrical components of the vehicle and/or chassis.
 All hitches listed above should be welded, in addition to, bolted to the frame with 1/2" bolts.

Hitch Plates

Flatbed/Flatbed Dump Hitch Plate Bumper



- Universal fit provides ICC bumper protection
- Two position pintle hook mounting or 2" receiver tube
- Includes two 5/8" forged D-rings w/brackets
- Standard mounting holes for Ford F350, F450, F550 (drilling required for GM trucks)
- Pre-punched hole fits multiple electrical adaptors
- Requires minimum of two 3" welds per side

Part No.	Description	M.G.T.W. (lbs.)	Wt. (lbs.)	Cat.
1809050	Flatbed Dump Hitch Bumper 16.17" H	20,000	117	551 (Y)

Flatbed/Flatbed Dump Hitch Plate Bumper



- Universal fit provides ICC bumper protection
- Two position pintle hook mounting or 2" receiver tube
- Includes two 5/8" forged D-rings w/brackets
- Standard mounting holes for Ford F350, F450, F550 (drilling required for GM trucks)
- Pre-punched hole fits multiple electrical adaptors
- Requires minimum of two 3" welds per side

Part No.	Description	M.G.T.W. (lbs.)	Wt. (lbs.)	Cat.
1809055	Flatbed Dump Hitch Receiver Bumper 16.17" Tall	17,000	124	551 (Y)

Vehicle ICC Bumpers



- Heavy-duty 4" structural steel construction
- Black powder coat finish

Part No.	Description	Wt. (lbs.)	Cat.
1809025	62" L x 17.5" H	42.5	519 (Y)

Please consult vehicle/chassis owner's manual prior to installation.
 Take all safety precautions to protect the electrical components of the vehicle and/or chassis.
 All hitches listed above should be welded, in addition to, bolted to the frame with 1/2" bolts.

Class 2 Multi-Fit Hitch Receiver



- Accepts class 2, 1-1/4" ball mounts
- Fits pickups, vans, SUVs
- Telescopic 2-bolt assembly
- No welding require
- Corrosion resistant black epoxy finish
- High strength grade 8 hardware included

Part No.	Description	M.V.L. (lbs.)	M.G.T.W. (lbs.)	Wt. (lbs.)	Cat.
1801000	Multi-Fit Hitch Receiver	350	3,500	31	532 (Y)

Class 3 Multi-Fit Hitch Receiver



- Accepts all 2" hitch accessories
- Includes all hardware required for installation
- Black powder coat finish
- Weight Distributing rating. Standard rating: 500 lbs. M.V.L., 5,000 lbs. M.G.T.W.

Part No.	Description	M.V.L. (lbs.)	M.G.T.W. (lbs.)	Wt. (lbs.)	Cat.
1801020	Multi-Fit Hitch Receiver	750*	7,500*	45.4	532 (Y)

* Weight Distributing rating. Standard rating: 500 lbs. M.V.L., 5,000 lbs. M.G.T.W.

Class 4 Multi-Fit Hitch Receiver



- Accepts all 2" hitch accessories
- Hide away design
- Black powder coat finish
- Includes all hardware required for installation
- Complies w/ SAE J648 & V-5 Standards for Class 4 Hitches

Part No.	Description	M.V.L. (lbs.)	M.G.T.W. (lbs.)	Wt. (lbs.)	Cat.
1801005	Multi-Fit Hitch Receiver	750**	7,500**	51	532 (Y)

** Weight Distributing rating. Standard rating: 600 lbs. M.V.L., 6,500 lbs. M.G.T.W.

Class 4 Service Body Hitch Receiver



- Accepts all 2" hitch accessories
- HD design for Stahl® service bodies
- Black powder coat finish
- 1801053 short hitch receiver fits Challenger®, recessed bumper;
- 1801055 long hitch receiver fits Challenger®, Grand Challenger®

Part No.	Description	M.V.L. (lbs.)	M.G.T.W. (lbs.)	Wt. (lbs.)	Cat.
1801053	Service Body Short Hitch Receiver	1,000	10,000	65	532 (Y)
1801055	Service Body Long Hitch Receiver	1,000	10,000	65.5	532 (Y)

Trailer Accessory Receiver



- Accepts 2" receiver-mounted accessories **(not for towing)**
- Universal fit; 6-1/2" (78") wide
- Black powder coat finish
- Mounting kit included (drilling required)
- Ships in two pieces: receiver (bulk) & mounting kit (boxed)

Part No.	Description	Wt. (lbs.)	Cat.
1801120	Trailer Accessory Receiver	70	532 (Y)

Trailer Accessory Receiver



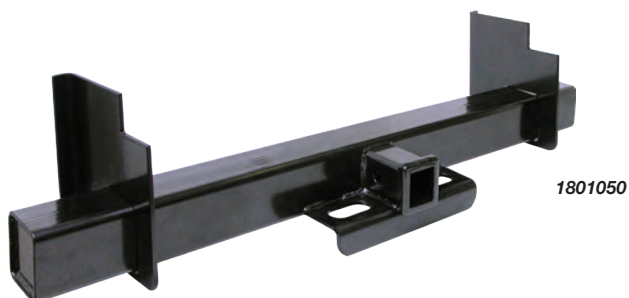
- Accepts 2" receiver-mounted accessories **(not for towing)**
- Ideal for bike & cargo racks
- Universal fit; 6-1/2" (78") wide
- Black powder coat finish
- Mounting kit included (drilling required)
- Ships in two pieces: receiver (bulk) & mounting kit (boxed)

Part No.	Description	Wt. (lbs.)	Cat.
NEW 1801125	Trailer Accessory Receiver	55	532 (Y)

[†] Buyers Products is not authorized by nor affiliated with the manufacturer of Stahl® products.

Hitch Receivers

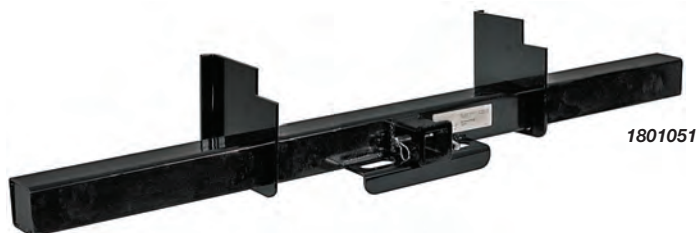
Class 5 Unimount Service Body Hitch Receiver



- Available with 2" or 2-1/2" tube
- HD design for service bodies
- Black powder coat finish
- Includes 5/8" hitch pin w/cotter
- Includes mounting plates
- Available w/o brackets
- Available unpainted

Part No.	Description	M.V.L. (lbs.)	M.G.T.W. (lbs.)	Wt. (lbs.)	Cat.
1801050	2" Service Body Hitch Receiver, 9" Mounting Plates, 44"L	1,600	16,000	48.7	532 (Y)
3006909	2" Service Body Hitch Receiver, No Mounting Plates, 44"L	1,600	16,000	39.0	532 (Y)
1801050L	2" Service Body Hitch Receiver, 18.29" Mounting Plates, 44"L	1,600	16,000	48.7	532 (Y)
1801052	2-1/2" Service Body Hitch Receiver, 9" Mounting Plates, 44"L	1,600	16,000	49.2	532 (Y)
3018538	2-1/2" Service Body Hitch Receiver, No Mounting Plates, 44"L	1,600	16,000	40.0	532 (Y)

Class 5 Unimount Platform Body Hitch Receiver



- Accepts all 2" hitch accessories
- HD design for platform bodies
- Black powder coat finish
- Includes 5/8" hitch pin w/cotter
- Includes mounting plates
- Available unpainted

Part No.	Description	M.V.L. (lbs.)	M.G.T.W. (lbs.)	Wt. (lbs.)	Cat.
1801051	2" Platform Body Hitch Receiver, 9" Mounting Plates, 62"L	1,600	16,000	62.0	532 (Y)
1801051L	2" Platform Body Hitch Receiver, 18.29" Mtg. plates, 62"L	1,600	16,000	62.0	532 (Y)

Class 5 Hitch Receivers



- Accepts all 2" hitch accessories (1801400, 2-1/2")
- HD design for Dodge/RAM, Ford & GM
- Black powder coat finish
- Available w/2" or 2-1/2" tube
- Includes 5/8" hitch pin with cotter
- Includes all hardware required for installation
- Available for use on cut-away service bodies



	Part No.	Description	M.V.L. (lbs.)	M.G.T.W. (lbs.)	Wt. (lbs.)	Cat.
NEW	1801100	2" Hitch Receiver for GM Express/Savana, 1996-2015	1,200	12,000	57.0	532 (Y)
	1801102	2" Hitch Receiver for GM Express/Savana, for use w/cutaway chassis 1996-2015	1,200	12,000	57.0	532 (Y)
NEW	1801111	2" Hitch Receiver for GM Cab & Chassis, 2011+	1,600	16,000	57.0	532 (Y)
	1801119	2" Hitch Receiver for GM 2500/3500 Pickup, No Short Bed, 2011+	1,600	16,000	75.0	532 (Y)
	1801208A	2" Hitch Receiver for Ford Cab & Chassis F350, 2009+	1,600	16,000	62	532 (Y)
NEW	1801214	2" Hitch Receiver for Ford F450/F550 Pickup, 2011+	1,700	17,000	62	532 (Y)
	1801301	2" Multi-Fit Hitch Receiver for Dodge/RAM, Ford & GM	1,600*	16,000*	64	532 (Y)
	1801400	2-1/2" Multi-Fit Hitch Receiver for Ford & GM for use w/cutaway service bodies (Mounting Hardware Not Included)	1,600*	16,000*	74.2	532 (Y)
	1801401	2" Multi-Fit Hitch Receiver for Ford & GM for use w/cutaway service bodies (Mounting Hardware Not Included)	1,600*	16,000*	72.9	532 (Y)

*Weight Distributing rating. Standard rating: 1,500 lbs. M.V.L., 15,000 lbs. M.G.T.W.

Tri-Ball Hitch, Black Balls





- Solid or tubular shank for 2" receiver tubes
- Black welded steel balls
- Black powder coated finish
- 5/8" hitch pin hole
- Patent #8,684,389

Part No.	Description	M.G.T.W. (lbs.)	M.G.T.W. (lbs.)	M.G.T.W. (lbs.)	Wt. (lbs.)	Cat.
		1-7/8" Ball Size	2" Ball Size	2-5/16" Ball Size		
 1802200	Ball Sizes: 1-7/8", 2", 2-5/16", Solid Shank	6,000	7,500	10,000	19.5	539 (Y)
 1802202	Ball Sizes: 1-7/8", 2", 2-5/16", Tubular Shank	6,000	7,500	10,000	11.9	539 (Y)

Tri-Ball Hitch, Chrome Balls



- Solid or tubular shank for 2" receiver tubes
- Chrome welded steel balls
- Black powder coated finish
- 5/8" hitch pin hole
- Patent #8,684,389

Part No.	Description	M.G.T.W. (lbs.)	M.G.T.W. (lbs.)	M.G.T.W. (lbs.)	Wt. (lbs.)	Cat.
		1-7/8" Ball Size	2" Ball Size	2-5/16" Ball Size		
 1802205	Ball Sizes: 1-7/8", 2", 2-5/16", Solid Shank	6,000	7,500	10,000	19.5	539 (Y)
 1802207	Ball Sizes: 1-7/8", 2", 2-5/16", Tubular Shank	6,000	7,500	10,000	11.9	539 (Y)

Tri-Ball Hitch, Black Balls w/Hook

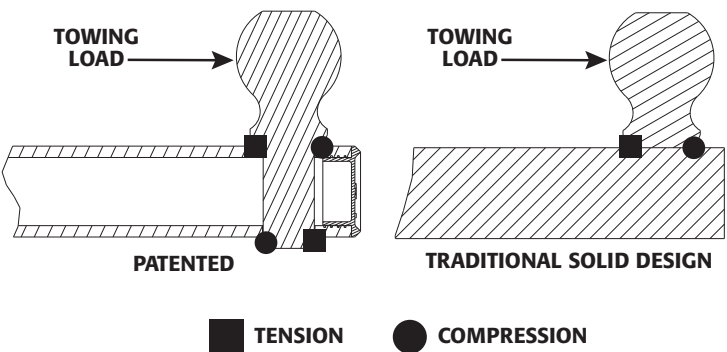


- Tubular shank for 2" receiver tubes
- Black welded steel towing balls
- Black powder coated finish
- 5/8" hitch pin hole
- Patent #8,684,389

Part No.	Description	M.G.T.W. (lbs.)	M.G.T.W. (lbs.)	M.G.T.W. (lbs.)	Wt. (lbs.)	Cat.
		1-7/8" Ball Size	2" Ball Size	2-5/16" Ball Size		
 1802208	Ball Sizes: 1-7/8", 2", 2-5/16"	6,000	7,500	10,000	13.4	539 (Y)

TUBULAR VS. SOLID TRI-BALL DESIGNS

In load testing per SAE J684, the Buyers patent pending tubular design is equivalent or superior to the traditional solid design. This is possible because the 2-5/16" ball design allows it to pass through the complete shaft (see figure).



Multi-Ball Hitches

Double Ball Mount, Black Balls



- Solid shank for 2" receiver tubes
- Black welded steel towing balls
- Black powder coated finish
- 5/8" hitch pin hole

Part No.	PKG. Part No.	Description	M.G.T.W. (lbs.) 2" Ball Size	M.G.T.W. (lbs.) 2-5/16" Ball Size	Wt. (lbs.)	Cat.
1802215	861215	Ball Sizes: 2", 2-5/16"	7,500	10,000	17	539 (Y)

Towing Ball Mounts w/Dual Balls



- Fits 2" receiver tubes
- Welded steel construction
- Black powder coat finish
- Larger diameter ball on bottom

Part No.	Description	Length	Max Drop	M.V.L. (lbs.)	M.G.T.W. (lbs.)	Wt. (lbs.)	Cat.
1803210	Double Ball Mount, (1-7/8" & 2" balls)	8"	2"	600	6,000	7.75	536 (Y)
1803215	Double Ball Mount, (2" & 2-5/16" balls)	8"	2"	600	6,000	11	536 (Y)

Adjustable Tri-Ball Hitch, Chrome Balls



1802225

- Solid shank for 2" receiver tubes
- Chrome welded steel towing balls
- Black powder coated finish
- 5/8" hitch pin hole
- 12" of vertical adjustment

Part No.	Description	M.G.T.W. (lbs.) 1-7/8" Ball Size	M.G.T.W. (lbs.) 2" Ball Size	M.G.T.W. (lbs.) 2-5/16" Ball Size	Wt. (lbs.)	Cat.
1802225	Ball Sizes: 1-7/8", 2", 2-5/16"	6,000	7,500	10,000	44	539 (Y)
3020620	Replacement Tri-Balls, Chrome Towing Balls	-	-	-	8.75	521 (Y)

Tri-Ball Hitch, Chrome Balls w/Pintle Hook



- Solid shank for 2" receiver tubes
- Chrome welded steel towing balls
- Black powder coated finish
- 5/8" hitch pin hole
- 7,500 lbs. cast steel pintle jaw
- Upper jaw locks in closed position (down) for lunette eye towing

Part No.	Description	M.G.T.W. (lbs.) 1-7/8" Ball Size	M.G.T.W. (lbs.) 2" Ball Size	M.G.T.W. (lbs.) 2-5/16" Ball Size	M.G.T.W. (lbs.) Pintle Hook	Wt. (lbs.)	Cat.
1802279	Ball Sizes: 1-7/8", 2", 2-5/16"	6,000	7,500	10,000	7,500	23	539 (Y)

Receiver Tubes



RT1251206

- 1-1/4", 2", or 2-1/2" receiver tubes
- Cast steel collar on 2"
- Finish options available
- Solid stress collar opening
- 5/8" Hitch pin hole (2" & 2-1/2" tubes); 1/2" Hitch pin hole (1-1/4" tubes)
- Can achieve ratings up to 20,000 lbs.

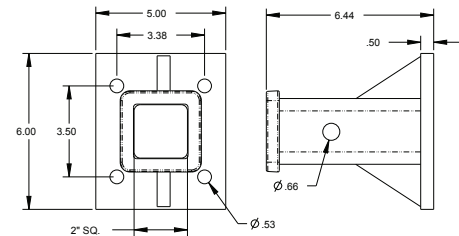
Part No.	Dimensions	Finish	Wt. (lbs.)	Cat.
RT1251206	1-1/4" I.D. x 6"	Black	1.8	532 (Y)
RT1251206UP	1-1/4" I.D. x 6"	Plain	1.8	532 (Y)
RT25806	2" I.D. x 6"	Plain	4	532 (Y)
RT255808	2-1/2" I.D. x 8"	Plain	7.55	532 (Y)
RT255812	2-1/2" I.D. x 12"	Plain	11.33	532 (Y)
RT255818	2-1/2" I.D. x 18"	Plain	17	532 (Y)
RT25806B	2" I.D. x 6"	Black	4	532 (Y)
RT25808	2" I.D. x 8"	Plain	5	532 (Y)
RT25808B	2" I.D. x 8"	Black	5	532 (Y)
RT25810	2" I.D. x 10"	Plain	6	532 (Y)
RT25810B	2" I.D. x 10"	Black	6	532 (Y)

Part No.	Dimensions	Finish	Wt. (lbs.)	Cat.
RT25812	2" I.D. x 12"	Plain	7	532 (Y)
RT25812B	2" I.D. x 12"	Black	7	532 (Y)
RT25814	2" I.D. x 14"	Plain	8.3	532 (Y)
RT25814B	2" I.D. x 14"	Black	8.3	532 (Y)
RT25818	2" I.D. x 18"	Plain	10	532 (Y)
RT25818B	2" I.D. x 18"	Black	10	532 (Y)
RT25824	2" I.D. x 24"	Plain	14	532 (Y)
RT25824B	2" I.D. x 24"	Black	14	532 (Y)
RT25836	2" I.D. x 36"	Plain	20	532 (Y)
RT25836B	2" I.D. x 36"	Black	20	532 (Y)
RT25848	2" I.D. x 48"	Plain	27	532 (Y)
RT25848B	2" I.D. x 48"	Black	27	532 (Y)

Bolt-On Receiver Tube



- Bolts across two standard pintle hook hole patterns
- Cast steel collar w/solid stress opening
- Black powder coat finish
- 5/8" Hitch pin hole
- Uses hardware kit 8520



Part No.	Description	M.V.L. (lbs.)	M.G.T.W. (lbs.)	Mounting Pattern (center to center)		Fastener Size	Wt. (lbs.)	Cat.
				Vertical	Horizontal			
1804055	2" I.D. x 6", welded to 1/2" steel mounting plate	2,000	20,000	3.50	3.38	1/2"	7.9	532 (Y)

Receiver Tube Adaptor



- Accepts all 2" hitch accessories
- Zinc plated steel
- Rounded corners
- 5/8" Hitch pin hole

Part No.	Description	M.V.L. (lbs.)	M.G.T.W. (lbs.)	Wt. (lbs.)	Cat.
RTA252	Reducer Sleeve Slides Inside 2-1/2" Receiver	Does not change capacity		3.25	532 (Y)

Step Bumper Hitch



- Fits most full sized trucks with step bumpers
- Accepts many 2" square ball mounts or accessories
- Black powder coat finish

Part No.	Description	M.V.L. (lbs.)	M.G.T.W. (lbs.)	Wt. (lbs.)	Cat.
SBH2	Step Bumper Hitch	350	3,500	6.25	532 (Y)

Receiver Tubes & Adapters

Hitch Adapter



- Ideal for light-duty receiver hitch accessories (ie. bike racks, cargo carrier)
- Cast steel collar
- Black powder coat finish
- 5/8" hitch pin hole
- **Not rated for towing**

Part No.	Description	M.V.L. (lbs.)	Wt. (lbs.)	Cat.
1804030	Converts 1-1/4" Receiver to 2" Hitch	300	7	532 (Y)

2" to 1-1/4" Hitch Adapter



- Reducer sleeve slides inside 2" receiver
- Accepts all 2" hitch accessories
- Zinc plated steel
- Rounded corners
- 5/8" Hitch Pin Hole

Part No.	Description	M.V.L. (lbs.)	M.G.T.W. (lbs.)	Wt. (lbs.)	Cat.
1804035	2" to 1-1/4" Hitch Adapter	300	3,000	3.5	532 (Y)

Receiver Extensions



1804005



1804015

- Extend your receiver by 7", 12", or 18"
- Cast steel collar
- Accepts all 2" hitch accessories
- Black powder coat finish
- 5/8" hitch pin hole
- Reduces hitch capacity

Part No.	Description	M.V.L. (lbs.)	M.G.T.W. (lbs.)	Wt. (lbs.)	Cat.
1804003	7" Receiver Extension	Reduces Hitch Capacity by 1/3		17.7	542 (N)
1804005	12" Receiver Extension	Reduces Hitch Capacity by 1/3		17.7	542 (N)
1804007	18" Receiver Extension	Reduces Hitch Capacity by 1/3		23.6	542 (N)
1804015	12" Receiver Extension w/Step	Reduces Hitch Capacity by 1/3		21	542 (N)
1804017	18" Receiver Extension w/Step	Reduces Hitch Capacity by 1/3		27	542 (N)

RV Bumper Receiver Adapter



- Fits standard 4" & 4-1/2" square RV bumpers
- Zinc plated hardware included
- Ideal for bike carriers & other accessories
- Accepts 2" tubes
- Assembly required

Part No.	Description	Wt. (lbs.)	Cat.
RVA24	RV Bumper Receiver Hitch (Not For Towing or Decorative Aluminum Bumper Covers)	7.0	532 (Y)

Travel Trailer Hitch



- 2" Receiver opening
- Mounts to 4" square tube bumper of RV
- Zinc plated hardware included
- Class 2
- Easy to Install
- Assembly Required

Part No.	Description	M.V.L. (lbs.)	M.G.T.W. (lbs.)	Wt. (lbs.)	Cat.
1804060	Universal Receiver Hitch	350	3,500	9.5	532 (Y)

3-Point Receiver Hitch Assembly



- 2" Receiver opening
- Fits common 3-point tractor hitches
- (2) 7/8" pins & (1) 5/8" hitch pin included
- Easy to install

Part No.	Description	Wt. (lbs.)	Cat.
3005345	3-Point Receiver Hitch Assembly	45.0	532 (Y)

Basic, Fixed w/ 1-1/4" Shank



- Fits 1-1/4" receiver tubes
- Solid shank
- Black powder coat finish
- Tongue accepts 3/4" diameter shank towing balls

Part No.	Description	Shank Size	Length	Max Drop	Rise	M.V.L. (lbs.)	M.G.T.W. (lbs.)	Wt. (lbs.)	Cat.
1803100CR	Basic, Fixed Ball Mount	1-1/4"	9"	1-1/4"	1-1/4"	300	3,500	5.85	536 (Y)

1-1/4" Shank, Black Powder Coated



1803105



1803110

- Fits 1-1/4" receiver tubes
- Solid shank
- Black powder coat finish
- Tongue accepts 3/4" diameter shank towing balls

Part No.	Description	Shank Size	Length	Max Drop	Rise	M.V.L. (lbs.)	M.G.T.W. (lbs.)	Wt. (lbs.)	Cat.
1803105	Ball Mount	1-1/4"	7"	2-1/2"	2"	300	3,500	4.15	536 (Y)
1803110	Ball Mount	1-1/4"	7"	4"	3-1/2"	300	3,500	5.50	536 (Y)

2" Shank, Black Powder Coated



1803005



1803007



1803010



1803013



1803015



1803017

- Straight & high-low tube style mounts
- Fits 2" receiver tubes
- Two-piece welded steel construction
- Black powder coat finish
- Tongue accepts 1" diameter shank towing balls

Part No.	Description	Shank Size	Length	Max Drop	Rise	M.V.L. (lbs.)	M.G.T.W. (lbs.)	Wt. (lbs.)	Cat.
1803005	Ball Mount	2"	8"	2"	3/4"	750	7,500	6.85	536 (Y)
1803007	Ball Mount	2"	10"	2"	3/4"	750	7,500	5.75	536 (Y)
1803009	Ball Mount	2"	13"	4"	2"	750	7,500	9.0	536 (Y)
1803010	Ball Mount	2"	8"	4"	2-3/4"	750	7,500	7.50	536 (Y)
1803013	Ball Mount	2"	10"	4"	2-3/4"	750	7,500	7.0	536 (Y)
1803014	Ball Mount	2"	9.75"	6"	2"	750	7,500	7.5	536 (Y)
1803015	Ball Mount	2"	10"	6"	4-3/4"	750	7,500	10.0	536 (Y)
1803017	Ball Mount	2"	10"	8"	6-3/4"	750	7,500	9.0	536 (Y)
1803019	Ball Mount, Solid Shank	2"	10.28"	10-1/4"	9"	600	6,000	16.0	536 (Y)



Ball Mounts

2" Shank, Chrome Plated



1803006



1803016

- Straight & deep drop tube style mounts
- Fits 2" receiver tubes
- Two-piece welded steel construction
- Chrome plated
- Tongue accepts 1" diameter shank towing balls.

Part No.	Description	Shank Size	Length	Max Drop	Rise	M.V.L. (lbs.)	M.G.T.W. (lbs.)	Wt. (lbs.)	Cat.
1803006	Ball Mount	2"	8"	2"	3/4"	750	7,500	6.85	536 (Y)
1803016	Ball Mount	2"	10"	6"	4-3/4"	750	7,500	10.0	536 (Y)

Heavy-Duty, 2" Shank, Black Powder Coated



1803050



1803055

- Fits 2" receiver tubes
- Single piece, solid, forged steel
- Black powder coat finish
- Tongue accepts 1" & 1-1/4" diameter shank towing balls

Part No.	Description	Shank Size	Hole	Length	Max Drop	Rise	M.V.L. (lbs.)	M.G.T.W. (lbs.)	Wt. (lbs.)	Cat.
1803050	Heavy-Duty Ball Mount	2"	1"	7.63"	2"	3/4"	2,000	20,000	12.0	536 (Y)
1803051	Heavy-Duty Ball Mount	2"	1-1/4"	7.63"	2"	3/4"	2,000	20,000	12.0	536 (Y)
1803055	Heavy-Duty Ball Mount	2"	1"	7.88"	4"	2-3/4"	2,000	20,000	12.8	536 (Y)
1803056	Heavy-Duty Ball Mount	2"	1-1/4"	7.88"	4"	2-3/4"	2,000	20,000	12.8	536 (Y)
1803058	Heavy-Duty Ball Mount	2"	1"	9.37"	6"	4-3/4"	1,700	17,000	16.0	536 (Y)
1803059	Heavy-Duty Ball Mount	2"	1-1/4"	9.37"	6"	4-3/4"	1,700	17,000	16.0	536 (Y)

Heavy-Duty, 2-1/2" Shank, Black Powder Coated



1803405



1803410

- Fits 2-1/2" receiver tubes
- Two-piece welded steel construction
- Black powder coat finish
- Tongue accepts 1-1/4" diameter shank towing balls

Part No.	Description	Shank Size	Length	Max Drop	Rise	M.V.L. (lbs.)	M.G.T.W. (lbs.)	Wt. (lbs.)	Cat.
1803405	Ball Mount	2-1/2"	10"	3"	1-1/2"	1,200	12,000	11.85	536 (Y)
1803410	Ball Mount	2-1/2"	10"	5"	3-1/2"	1,200	12,000	14.50	536 (Y)
NEW 1803415*	Ball Mount	2-1/2"	10"	7-3/4"	6-1/4"	1,500	15,000	15.78	536 (Y)

* Available Q4'16

Clevis Ball Mount, Black Powder Coated



1803060

- Use as clevis ball mount or ball mount
- Fits 2" receiver tubes
- Black powder coat finish
- Accepts 1" diameter shank towing balls
- 1803065 has solid shank

Part No.	Description	Shank Size	Length	M.V.L. (lbs.)	M.G.T.W. (lbs.)	Wt. (lbs.)	Cat.
1803060	Tubular Shank	2"	9-1/4"	600	6,000	11.9	536 (Y)
1803065	Solid Shank	2"	9-1/4"	800	8,000	17.4	536 (Y)

Adjustable Ball Mounts



1803090



1803093

- Fits 2" receiver tubes
- Welded steel construction
- Black powder coat finish
- Accepts 1" diameter shank towing balls

Part No.	PKG. Part No.	Description	Shank Size	Max Drop	Max Lift	M.V.L. (lbs.)	M.G.T.W. (lbs.)	Wt. (lbs.)	Cat.
1803090	861090	4-Position, Tubular Shank	2"	11"	9-3/4"	600	6,000	20	536 (Y)
1803095		4-Position, Solid Shank	2"	11"	9-3/4"	1,000	10,000	32	536 (Y)
1803093		3-Position, Tubular Shank	2"	8"	6-3/4"	600	6,000	14.89	536 (Y)

Ball Mount Kits



1803306

- Kit includes ball mount assembled with ball & hitch pin
- Ball mounts fits 2" receiver tubes
- Black powder coat or chrome ball mounts
- Two-piece welded steel construction
- Ball mount kits sold in 3-packs only

Part No.	Description	Hitch Pin Type	Shank Size	Ball Size	Max Drop	M.V.L. (lbs.)	M.G.T.W. (lbs.)	Wt. (lbs.)	Cat.
1803306	Chrome Ball Mount Kit	Cotter	2"	2"	2"	500	5,000	10	536 (Y)
1803306LP	Chrome Ball Mount Kit	Locking	2"	2"	2"	500	5,000	11.7	536 (Y)
1803307	Black Ball Mount Kit	Cotter	2"	2"	2"	500	5,000	10	536 (Y)
1803308	Chrome Ball Mount Kit	Cotter	2"	2-5/16"	2"	600	6,000	10	536 (Y)
NEW 1803312	Chrome Ball Mount Kit	Cotter	2"	1-7/8"	4"	600	6,000	12	536 (Y)
1803313	Black Ball Mount Kit	Cotter	2"	2"	4"	500	5,000	12	536 (Y)
1803314	Black Ball Mount Kit	Cotter	2"	2-5/16"	4"	600	6,000	12	536 (Y)

Hitch Balls



- Available in chrome
- Individually packaged

Part No.	Ball DIA.	Shank DIA.	Shank Length	M.G.T.W. (lbs.)	Wt. (lbs.)	Cat.
1802005	2"	1"	2-1/8"	5,000	2.50	545 (Y)
1802007	2"	1"	2-3/4"	10,000	2.50	545 (Y)
1802010	2"	3/4"	2-1/8"	3,500	2.10	545 (Y)
1802015	1-7/8"	3/4"	2-1/8"	3,500	1.80	545 (Y)
1802020	1-7/8"	1"	2-1/8"	5,000	2.25	545 (Y)
1802025	2-5/16"	1-1/4"	2-3/4"	10,000	4.20	545 (Y)
1802026	2-5/16"	1"	2-1/8"	7,500	3.20	545 (Y)
1802027	2-5/16"	1"	2-3/4"	10,000	3.20	545 (Y)

Ball Mounts

Bulk Hitch Balls



1802050

- Individually bagged
- Plain black finish
- 1" & 2" risers available

Part No.	Finish / Description	Ball DIA.	Shank DIA.	Shank Length	M.G.T.W. (lbs.)	Wt. (lbs.)	Cat.
1802050	Plain	2-5/16"	1-1/4"	2-3/4"	30,000	4.10	545 (Y)
1802055	Plain, w/1" riser	2-5/16"	1-1/4"	2-3/4" (+1" riser)	30,000	4.81	545 (Y)
1802056	Plain, w/1" riser	2-5/16"	1-1/2"	2-3/4" (+1" riser)	30,000	4.85	545 (Y)
1802061	Plain, w/2" riser	2-5/16"	1-1/2"	2-3/4" (+2" riser)	30,000	5.60	545 (Y)

Bulk Hitch Balls



1802175



- Individually labeled w/part no., description & UPC barcode
- Available w/chrome or zinc finish
- Orders in multiples of 10 (10 balls per master carton)

Part No.	Finish / Description	Ball DIA.	Shank DIA.	Shank Length	M.G.T.W. (lbs.)	Wt. (lbs.)	Cat.
1802103	Chrome	1-7/8"	5/8"	1-3/4"	2,000	1.75	545 (Y)
1802105	Chrome	1-7/8"	3/4"	1-3/4"	2,000	1.80	545 (Y)
1802106	Zinc	1-7/8"	3/4"	1-3/4"	2,000	1.80	545 (Y)
1802108	Chrome	1-7/8"	3/4"	2-1/8"	3,500	1.80	545 (Y)
1802110	Chrome	1-7/8"	1"	2-1/8"	2,000	2.25	545 (Y)
1802111	Zinc	1-7/8"	1"	2-1/8"	2,000	2.25	545 (Y)
1802130	Chrome	2"	3/4"	1-3/4"	3,500	2.10	545 (Y)
1802131	Zinc	2"	3/4"	1-3/4"	3,500	2.10	545 (Y)
1802134	Chrome	2"	1"	2-1/8"	5,000	2.50	545 (Y)
1802135	Zinc	2"	1"	2-1/8"	5,000	2.50	545 (Y)
1802136	Chrome	2"	1"	2-3/4"	10,000	5.50	545 (Y)
1802148	Chrome	2"	1-1/4"	2-1/4"	7,500	3.75	545 (Y)
1802161	Chrome	2-5/16"	1"	2-1/8"	6,000	3.20	545 (Y)
1802162	Zinc	2-5/16"	1"	2-1/8"	6,000	3.20	545 (Y)
1802167	Chrome	2-5/16"	1-1/4"	2-1/2"	10,000	4.25	545 (Y)
1802168	Zinc	2-5/16"	1-1/4"	2-1/2"	10,000	4.25	545 (Y)
1802175	Chrome, w/2" riser	2-5/16"	1-1/4"	2-1/2" (+2" riser)	5,000	5.60	545 (Y)

Class 2 Trailer Safety Chains



B93272SC

- Zinc plated
- Includes quick link connectors
- NOT FOR LIFTING

Part No.	PKG. Part No.	Description	Chain DIA.	Chain Length	M.G.T.W. (lbs.)	Wt. (lbs.)	Cat.
B31648SC		2 - Quick Link Connectors	3/16"	48"	5,000	2.00	547 (N)
B93234SC		1 - Quick Link Connectors	9/32"	34"	5,000	2.08	544 (N)
B93248SC	11215*	2 - Quick Link Connectors	9/32"	48"	5,000	3.31	547 (N)
B93254SC	11250*	2 - Quick Link Connectors	9/32"	54"	5,000	3.65	547 (N)
B93272SC	11220*	2 - Quick Link Connectors	9/32"	72"	5,000	4.68	547 (N)

*Packaged chains ship 5 per carton

Class 4 Trailer Safety Chains



- Heavy-Duty zinc plated
- Includes 1 forged slip hook
- NOT FOR LIFTING

Part No.	Description	Chain DIA.	Chain Length	Coil	M.G.T.W. (lbs.)	Wt. (lbs.)	Cat.
B03822SC	1 - Forged Slip Hook	3/8"	22"	30 Proof	10,000	2.62	547 (N)

Class 4 Trailer Safety Chains



B3835SC

- Heavy-Duty zinc plated
- Includes 1 clevis style slip hook
- NOT FOR LIFTING

Part No.	PKG. Part No.	Description	Chain DIA.	Chain Length	Coil	M.G.T.W. (lbs.)	Wt. (lbs.)	Cat.
B03835SC		1 - Clevis Style Slip Hook	3/8"	35"	30 Proof	10,000	5.00	547 (N)
BSC3835	11275*	1 - Clevis Style Slip Hook	3/8"	35"	43 Proof	15,000	5.75	547 (N)
BSC3842		1 - Clevis Style Slip Hook	3/8"	42"	43 Proof	15,000	5.50	547 (N)

*Packaged chains ship 5 per carton

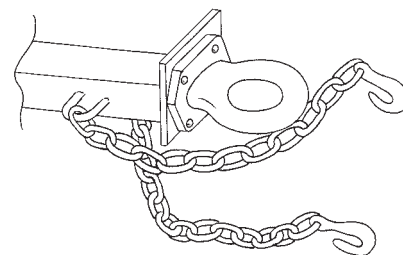
PROPER SAFETY CHAIN USE

Safety Chains act as the final connection between the towing vehicle and the trailer, in the event there is a failure in the towing hitch and/or the coupler.

Use one or two safety chains set to a length that will allow for the turning radius of the vehicle but will not drag on the ground when in operation. The safety chains must have a "holding" capacity of at least the total weight of the trailer and contents.

When applying the safety chain hook up, cross the chain(s) under the trailer tongue to ensure that the tongue will not drop to the ground in the event of a failure.

For full SAE safety chain specifications, refer to SAE J684 specifications and standards.



Safety Chain Accesories

Weld-On Safety Chain Retainer



- Forged steel
- Removable pin
- Easier chain replacement
- No masking chains when painting

Part No.	Description	Wt. (lbs.)	Cat.
5471000	Safety Chain Retainer, For 5/16" Chain, 10K lbs MAX	0.73	518 (N)
5471001	Safety Chain Retainer, For 3/8" Chain, 25K lbs MAX	1.06	518 (N)

Cruciform Safety Chain Bracket



- Bracket weld to bumper or hitch plate
- Insert safety chain through bracket & twist 1/4" turn for extra security

Part No.	Description	Wt. (lbs.)	Cat.
SC450C	4" x 5-1/2" x 1/2" Thick Steel Tubing	9.02	547 (N)

Chain Clip



- Steel rod chain clip
- Secure chains to trailer frames

Part No.	Description	Wt. (lbs.)	Cat.
SC38B	3/8" dia. Safety Chain Clip	0.15	547 (N)
SC44B	7/16" dia. Safety Chain Clip	0.19	547 (N)
SC50B	1/2" dia. Safety Chain Clip	0.36	547 (N)
SC58B	5/8" dia. Safety Chain Clip	0.90	547 (N)

Double Clevis Link



- Drop forged
- Heat treated
- Clear Zinc plated

Part No.	Chain Size	Pin Diameter	W.L.L. (lbs.)	Wt. (lbs.)	Cat.
B2409C	3/8"	1/2"	5,400	0.75	710 (N)

Quick Link Connector



- 3/8" diameter
- Zinc plated
- Ideal for connecting chain, cable, wire or rope
- Not for lifting

Part No.	Description	W.L.L. (lbs.)	Wt. (lbs.)	Cat.
7350038	3/8" dia. Quick Link Connector	2,650	0.25	700 (N)

Eye Hoist Hook



- Drop forged steel
- Zinc Plated
- Inside length is 2-1/2"

Part No.	Description	W.L.L. (lbs.)	Wt. (lbs.)	Cat.
EH02CL	Forged Eye Hoist Hook w/Latch	4,000	2.0	700 (N)

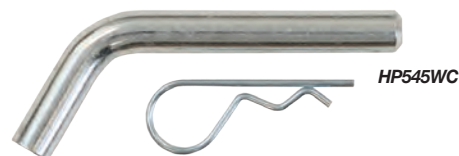
Hitch Pin Assembly w/Spring Clip






- 5/8" Zinc hitch pin w/integral spring clip
- Fits 2" receivers
- Spring clip rotates to lock into place
- Retail packaging (50 per master carton)

Part No.	Description	Wt. (lbs.)	Cat.
 HP625SC	5/8" x 4.0" Clear Zinc Hitch Pin w/Spring Clip	0.50	529 (Y)

Hitch Pin Assembly



- Zinc plated w/hairpin cotter
- Available in three sizes
- Replacement cotter pins also available
- Sold individually (bagged) or in a Quick Pack box (must order in quantities of 25)

Part No.	PKG. Part No.	Description	Wt. (lbs.)	Cat.
 HP545WC	HP545WCP	1/2" x 3.2" Clear Zinc Hitch Pin Assembly: Fits 1-1/4" Receivers	0.30	529 (Y)
 HP6253WC	HP6253WCP	5/8" x 4.0" Clear Zinc Hitch Pin Assembly: Fits 2" Receivers	0.60	529 (Y)
 HP6256WC		5/8" x 4.5" Yellow Zinc Heavy Duty Hitch Pin Assembly: Fits 1-1/2" Receivers	0.60	529 (Y)

Cotter Pin



- Zinc plated cotter pin
- Available in five sizes
- Replacement cotter pins

Part No.	Description	Wt. (lbs.)	Cat.
HP9	3/32" dia. Zinc Cotter Pin Replacement	0.01	520 (N)
HP10	1/8" dia. Zinc Cotter Pin Replacement	0.04	520 (N)
HP11	5/8" dia. Zinc Cotter Pin Replacement	0.05	520 (N)
HP12	5/32" dia. Zinc Cotter Pin Replacement	0.07	520 (N)
HP13	3/16" dia. Zinc Cotter Pin Replacement	0.07	520 (N)

Locking Hitch Pin



- Black powder coat finish with chrome plated pin
- Available in two sizes

Part No.	Description	Wt. (lbs.)	Cat.
 BLHP125	1/2" Locking Hitch Pin Assembly: Fits 1-1/4" Receivers	0.80	529 (Y)
 BLHP200	5/8" Locking Hitch Pin Assembly: Fits 2" or 2-1/2" Receivers	1.90	529 (Y)

Bone Style Locking Hitch Pin



- "Bone" style locking hitch pin assembly
- Chrome & black nickel finish available
- 5/8" dia. fits 2" receivers

Part No.	Description	Wt. (lbs.)	Cat.
 BLHP300	5/8" Bone Style Locking Hitch Pin Assembly w/Chrome Finish	0.85	529 (Y)
 BLHP400	1/2"-5/8" Bone Style Locking Hitch Pin w/Black Nickel Finish (Sleeved For 5/8")	0.75	529 (Y)



Available in Retail Package

Towing Hooks

Receiver Mount Tow Hook

- Straight Pattern
- Fits 2" receiver tube
- Black powder coat



Part No.	Description	Capacity	Wt. (lbs.)	Cat.
RM10H	Receiver Mount Tow Hook	10,000	4.3	528 (N)

Forged Receiver Mount Tow Hook

- Straight Pattern
- Fits 2" receiver tube
- Black powder coat



Part No.	Description	Capacity	Wt. (lbs.)	Cat.
RM12H	Forged Receiver Mount Tow Hook	12,000	9.0	528 (N)

Forged Receiver Mount Tow Eye

- Straight Pattern
- Fits 2" receiver tube
- Black powder coat



Part No.	Description	Capacity	Wt. (lbs.)	Cat.
RM1225E	Forged Receiver Mount Tow Eye	12,000	9.2	528 (N)

Drop Forged Light-Duty Towing Hooks



B2799B

- Universal pattern
- Drop forged steel
- Available in black powder coat
- Shipped in pairs

Part No.	Description	W.L.L. (Per Hook, lbs.)	Wt. /Pr. (lbs.)	Cat.
B2799B	Black Powder Coated Towing Hooks	10,000	3.5	528 (N)
B2799BKT	Black Powder Coated Towing Hooks w/ Safety Clip & Bolt Kit	10,000	3.7	528 (N)

Drop Forged Heavy-Duty Towing Hooks



B2408W

- Forged steel, weld-on
- Grade 43

Part No.	Description	W.L.L. (Per Hook, lbs.)	Wt./Pr. (lbs.)	Cat.
B2408W	5/16" Weld-On Towing Hook	3,900	0.44	700 (N)
B2408W375	3/8" Weld-On Towing Hook	5,400	0.87	700 (N)
B2408W50	1/2" Weld-On Towing Hook	9,200	1.72	700 (N)

Drop Forged Heavy-Duty Towing Hooks



B2409W625

- Forged steel, weld-on
- Grade 70

Part No.	Description	W.L.L. (Per Hook, lbs.)	Wt./Pr. (lbs.)	Cat.
B2409W375	3/8" Weld-On Towing Hook	6,600	1.0	700 (N)
B2409W625	5/8" Weld-On Towing Hook	15,800	2.5	700 (N)

Drop Forged Heavy-Duty Towing Shackle



- Straight Pattern
- Shipped Individually
- Black Finish

Part No.	Description	W.L.L. (Per Hook, lbs.)	Wt. (lbs.)	Cat.
B0681	Black Finish Towing Shackle	18,000	9.7	524 (N)

Drop Forged Towing Hooks



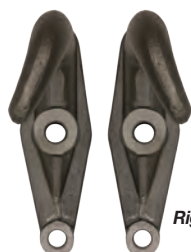
Left Hand

Right Hand

- Shipped in pairs of right and left hand patterns
- Available in black powder coat, chrome plated or plain finish

Part No.	Description	W.L.L. (Power Hook, lbs.)	Hole Spacing (center to center)		Hole Size	Wt./Pr. (lbs.)	Cat.
			Vertical	Horizontal			
B2800A	Plain Finish Towing Hooks	13,500	4.25	-	0.78	9.4	528 (N)
B2800AB	Black Powder Coated Towing Hooks	13,500	4.25	-	0.79	9.4	528 (N)
B2800AC	Chrome Plated Towing Hooks	13,500	4.25	-	0.80/0.66	9.4	528 (N)

Drop Forged Heavy-Duty Towing Hooks



Left Hand

Right Hand

- Shipped in pairs of right and left hand patterns
- Plain finish

Part No.	Description	W.L.L. (Per Hook, lbs.)	Hole Spacing (center to center)		Hole Size	Wt./Pr. (lbs.)	Cat.
			Vertical	Horizontal			
B2801A	2-Hole Plain Finish Towing Hooks	44,600	4.19	-	0.67/0.79	15.5	528 (N)

Drop Forged Heavy-Duty Towing Hooks



Left Hand

Right Hand

- Shipped in pairs of right and left hand patterns
- Plain finish

Part No.	Description	W.L.L. (Per Hook, lbs.)	Hole Spacing (center to center)		Hole Size	Wt./Pr. (lbs.)	Cat.
			Vertical	Horizontal			
B2801C	3-Hole Plain Finish Towing Hooks	44,500	4.50	2.75	0.68	10.0	528 (N)

Drop Forged Heavy-Duty Towing Hook



- Straight Pattern
- Shipped Individually
- Black Finish

Part No.	Description	W.L.L. (Per Hook, lbs.)	Hole Spacing (center to center)		Hole Size	Wt./Pr. (lbs.)	Cat.
			Vertical	Horizontal			
B076A	3-Hole Black Finish Towing Hook	20,000	2.50	2.81	1.25	4.0	528 (N)

Towing Control, Bike Rack

Weight Distributing Hitch



- Increased ride stability
- Improved control
- Improved braking & steering
- Raised hitch platform for additional trailer coupler clearance
- Dual sway control capability

Part No.	Description	G.V.W.R.	Vertical Rating (lbs.)	Wt. (lbs.)	Cat.
 5421012	Weight Distributing Hitch, Trunnion Bar	12,000	1,200	89.00	542 (N)

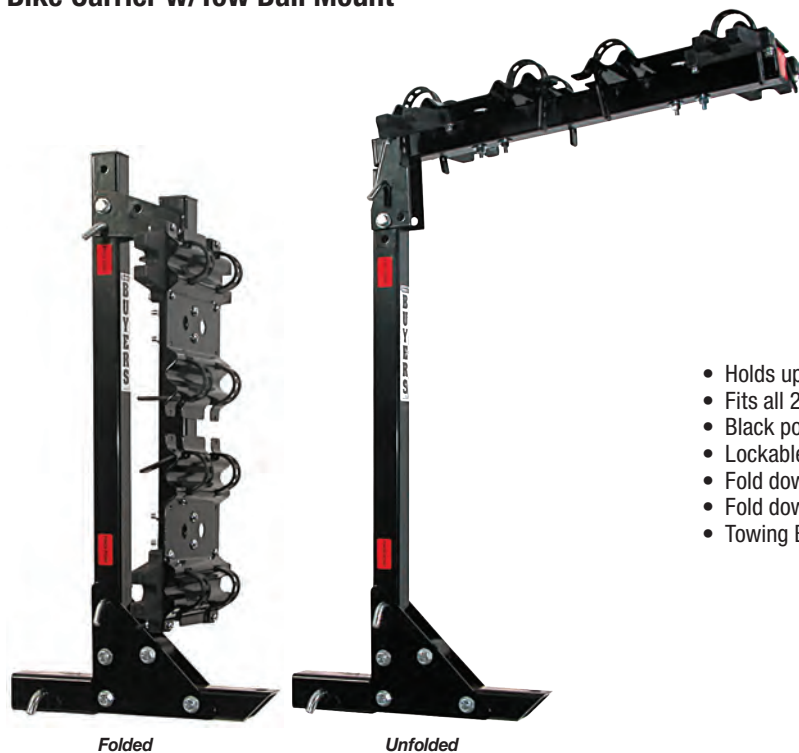
Sway Control



- Reduces sway from windy conditions or passing vehicles
- Comes complete w/slide bar, crank handle, chrome ball, spring clips, friction plate & mount reinforcement plate
- Detaches quickly for storage

Part No.	Description	Wt. (lbs.)	Cat.
 5431000	Friction Sway Control	15.10	543 (N)

Bike Carrier w/Tow Ball Mount



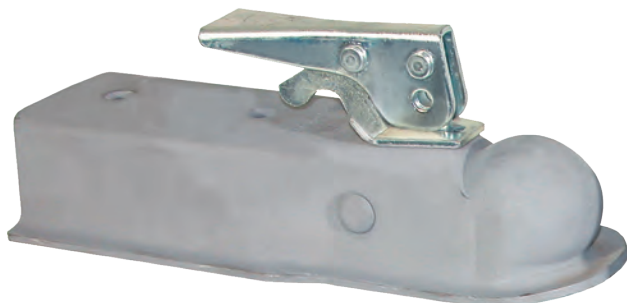
- Holds up to 4 bikes
- Fits all 2" receiver tubes
- Black powder coat/rubber-coat finish
- Lockable (lock not included)
- Fold down arms when not in use
- Fold down feature allows access to rear of vehicle
- Towing Ball sold separately

Part No.	Description	M.G.T.W. (lbs.)	Wt. (lbs.)	Cat.
 1805005	4-Bike Carrier w/Towing Capabilities	3,500	44.0	542 (Y)

Straight Tongue Couplers



0091050Z

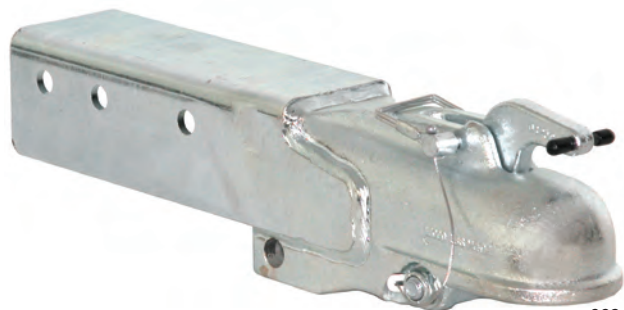


0091061

- 2", 2-1/2" or 3" channel
- Can be bolted or welded to trailer frame
- Primed option do not have mounting holes

Part No.	Description	M.G.T.W. (lbs.)	Class	Wt. (lbs.)	Cat.
0091050	1-7/8" Ball x 2" Channel	2,000	1	2.56	534 (N)
NEW 0091050Z	1-7/8" Ball x 2" Channel, Zinc	2,000	1	2.56	534 (N)
0091052	1-7/8" Ball x 2-1/2" Channel, Zinc Plated	2,000	1	2.90	534 (N)
0091055	1-7/8" Ball x 3" Channel	2,000	1	2.66	534 (N)
0091058	2" Ball x 2" Channel	3,500	2	4.0	534 (N)
0091058Z	2" Ball x 2" Channel, Zinc Plated	3,500	2	4.0	534 (N)
0091060	2" Ball x 2-1/2" Channel, Grey Primer	3,500	2	4.38	534 (N)
NEW 0091060Z	2" Ball x 2-1/2" Channel, Zinc Plated	3,500	2	4.38	534 (N)
0091061	2" Ball x 2-1/2" Channel, No Holes, Primer	3,500	2	4.38	534 (N)
0091065	2" Ball x 3" Channel	3,500	2	4.50	534 (N)

Heavy-Duty Straight Tongue Couplers



0091562

- Auto engage latch
- Easy one hand operation
- 3" channel welded to coupler
- Cast steel coupler
- Zinc & clear chromate finish

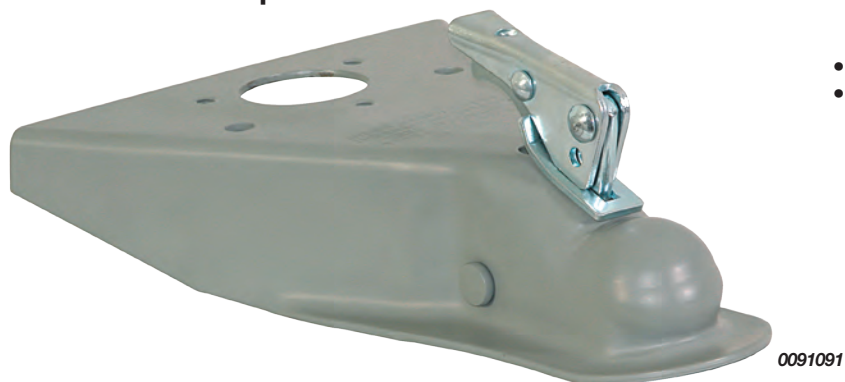
Part No.	Description	M.G.T.W. (lbs.)	Class	Wt. (lbs.)	Cat.
0091560	2" Cast Coupler w/3" Channel	10,000	4	15.0	543 (N)
0091562	2-5/16" Cast Coupler w/3" Channel	15,000	4	15.0	543 (N)



Available in Retail Package

A-Frame Couplers

A-Frame Trailer Couplers



- 50° A-Frame design
- Predrilled for round jack mounting

Part No.	Description	M.G.T.W. (lbs.)	Class	Wt. (lbs.)	Cat.
0091091	A-Frame Coupler, 2" Ball	5,000	3	6.70	534 (N)
0091097	A-Frame Coupler, 2-5/16" Ball	10,000	4	8.38	534 (N)

Heavy-Duty Cast Coupler w/A-Frame



- Auto engage latch
- Easy one hand operation
- 50° A-Frame design
- Predrilled for round jack mounting
- Black powder coat finish

Part No.	Description	M.G.T.W. (lbs.)	Class	Wt. (lbs.)	Cat.
0091595	2-5/16" Black Cast Coupler	15,000	4	25.0	543 (N)

Coupler Latch Lock



- 1/4" Diameter steel pin x 3/4" adjustable travel
- Zinc plated solid cast metal
- Includes 2 keys
- Secures trailer on & off truck
- Black powder coat finish

Part No.	Description	Wt. (lbs.)	Cat.
BCL500	1/4" Pin x 3/4" Span	0.40	529 (Y)

Comparable Coupler Part No.

BUYERS	ATWOOD®	DUTTON-LAINSON®	FULTON®	SHELBY®
0091050	—	940P-1	11200	5128
0091055	—	970P-1	11300	5131
0091058	—	982P-2	22250	5111
0091060	80051	985P-2	22300	5135

Buyers Products is not authorized by nor affiliated with the manufacturer Atwood®, Dutton-Lainson®, Fulton®, or Shelby® products. This information is made available for the convenience of our customers and is not meant to indicate that the product is shipped to/from above companies.

Cast Couplers

- Heavy-duty cast steel construction
- Auto-engage latch
- Easy one-hand operation
- Can be pinned open for ease of coupling
- Multiple mounting configurations available: heavy-duty 3-position or 5-position channel, bolt-on, one-piece channel
- Order complete assembly or individual components
- 3" Coupler channels, 2" on center mounting holes

Cast Coupler w/No Channel



0091540

Part No.	Description	Mount Style	M.G.T.W. (lbs.)	Wt. (lbs.)	Cat.
0091540	Cast Coupler, 2"	Channel	10,000	13.9	543 (N)
0091550	Cast Coupler, 2-5/16"	Channel	15,000	13.0	543 (N)

Cast Coupler w/3-Position Channel



0091553

Part No.	Description	Mount Style	M.G.T.W. (lbs.)	Wt. (lbs.)	Cat.
0091543	2" w/3-Position Channel & Fasteners	Channel	10,000	22.4	543 (N)
0091553	2-5/16" w/3-Position Channel & Fasteners	Channel	15,000	22.0	543 (N)

Cast Coupler w/5-Position Channel



0091555

Part No.	Description	Mount Style	M.G.T.W. (lbs.)	Wt. (lbs.)	Cat.
0091545	2" w/5-Position Channel & Fasteners	Channel	10,000	28.9	543 (N)
0091555	2-5/16" w/5-Position Channel & Fasteners	Channel	15,000	28.0	543 (N)

One Piece Cast Coupler



Part No.	Description	Mount Style	M.G.T.W. (lbs.)	Wt. (lbs.)	Cat.
0091558	2-5/16" Cast Coupler	4-1/2" Sq. Hole Pattern, to Suit 5/8" Bolt	15,000	12.0	543 (N)



Adjustable Cast Couplers

Gooseneck Coupler



- Cast steel design
- Fits 2-5/16" towing ball
- Used w/ 4" or 4-1/2" round or square pipe
- Grade 8 hardware included
- Tested to SAE J2638

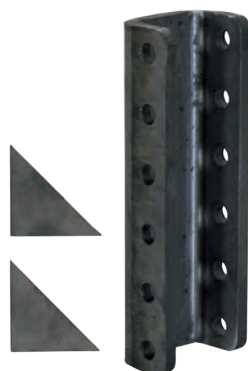
Part No.	Description	M.V.L. (lbs.)	M.G.T.W. (lbs.)	Wt. (lbs.)	Cat.
1808010	Gooseneck Coupler	N/A	30,000	12.5	546 (N)

3-Position Channel & 5-Position Channel



Part No.	Description	Wt. (lbs.)	Cat.
B8978	3-Position Channel Only; used w/0090150, 0090100, 0091005 & B16137	9.06	527 (N)
B8979	5-Position Channel w/ Weld Gussets; used w/0090150, 0090100, 0091005 & B16137	15.0	543 (N)
B9020	Bolt & Nut Kit (2 each) 5/8-11 x 4-1/2 GR 8; used w/B8978, B8979	1.0	543 (N)

Heavy-Duty 3 Position Channel & 5-Position Channel



Part No.	Description	Wt. (lbs.)	Cat.
B9909	3-Position Channel w/ Weld Gussets; used w/0091550	9.06	527 (N)
B9912	5-Position Channel w/ Weld Gussets; used w/B16137, B20135	12.1	543 (N)
B9021	Bolt & Nut Kit (2 each) 5/8-11 x 5 GR 8; used w/B9909 & B9912	1.0	543 (N)

Adjustable Eye Assembly



- Ductile cast iron eye
- Formed steel channel
- 3" I.D. eye
- 1-9/16" eye section

Part No.	PKG. Part No.	Description	M.V.L. (lbs.)	M.G.T.W. (lbs.)	Wt. (lbs.)	Cat.
B18128	10066	3" Eye w/3-Position 3" Channel & Fasteners	2,000	12,000	14.5	543 (N)
B18135		3" Eye w/5-Position 3" Channel, Fasteners & Gussets	2,000	12,000	19.25	543 (N)

Adjustable Eye Assembly w/ Heavy Duty Channel



- Ductile cast iron eye
- HD Formed steel channel
- 3" I.D. eye
- 1-9/16" eye section

Part No.	Description	M.V.L. (lbs.)	M.G.T.W. (lbs.)	Wt. (lbs.)	Cat.
B20143	3" Eye w/3-Position 3" HD Channel, Fasteners & Gussets	2,000	20,000	21.5	543 (N)
B20145	3" Eye w/5-Position 3" HD Channel, Fasteners & Gussets	2,000	20,000	25.5	543 (N)

Adjustable Eye Assembly w/Heavy-Duty Channel



- Ductile cast iron eye
- HD Formed steel channel
- 3" I.D. eye
- 1-9/16" eye section

Part No.	Description	M.V.L. (lbs.)	M.G.T.W. (lbs.)	Wt. (lbs.)	Cat.
B20135	3" Eye w/5-Position 3" HD Channel, Fasteners & Gussets	2,000	14,000	26.58	543 (N)

7-Ton Cast Eyes



- Ductile cast iron eye
- 3" I.D. eye
- 1-9/16" eye section

Part No.	Description	M.V.L. (lbs.)	M.G.T.W. (lbs.)	Wt. (lbs.)	Cat.
B16137	3" ID	2,000	14,000	11.0	543 (N)
B16137BK	3" ID, Black Powder Coat	2,000	14,000	11.0	543 (N)
B16137Z	3" ID, Zinc Plated	2,000	14,000	11.0	543 (N)

10-Ton Forged Eyes



- Forged steel eye
- 3" I.D. eye
- 1-9/16" eye section

Part No.	Description	M.V.L. (lbs.)	M.G.T.W. (lbs.)	Wt. (lbs.)	Cat.
B16140	3" ID	2,000	20,000	12.0	543 (N)
B16140Z	3" ID, Zinc Plated	2,000	20,000	12.0	543 (N)

Accessories & Replacement Parts					
Part No.	Description			Wt. (lbs.)	Cat.
0091015	Adjustable Cast Coupler Repair Kit, used w/0091005			2.5	543 (N)
B8978	3-Position Channel Only; used w/0090150, 0090100, 0091005, & B16137			9.06	527 (N)
B8979	5-Position Channel w/Weld Gussets; used w/0090150, 0090100, 0091005, & B16137			15.0	543 (N)
B9020	Bolt & Nut Kit (2 each) 5/8-11 x 4-1/2 GR 8; used w/B8978, B8979, B16137 & B16137BK			1.0	543 (N)
B9021	Bolt & Nut Kit (2 each) 5/8-11 x 5 GR 8; used w/B9909, B9912, B20143, & B20745			1.0	543 (N)
B9909	Heavy-Duty 3-Position Channel w/Weld Gussets; used w/0091550 & B20143			9.06	527 (N)
B9912	Heavy-Duty 5-Position Channel w/Weld Gussets; used w/B16137 & B20135			12.1	543 (N)
3013872	Drawbar Gauge			0.98	543 (N)

12-Volt Electric Jack



- 48" Long prewired (7-Pin RV Type) trailer connector power supply for quick, plug-in operation
- 5,000 lbs. breakaway capacity (assists hitch ball release)
- Hardened steel gears
- Full 24" stroke: (18" power + 6" manual drop leg extension)
- Oversized foot pad prevents divots
- Zinc plated foot is adjustable on 1-1/2" centers (detachable)
- Built-in leveling gauge
- LED night light
- Weather sealed switches
- Durable, black powder coat finish
- 33" overall height

Part No.	Description	Capacity (lbs.)	Travel	Wind	Wt. (lbs.)	Cat.
 0093500	12 Volt DC powered w/manual crank over-ride	3,500	24"/18"	Top	22.00	533 (N)

Swing-Away Marine Jack



- 14-3/4" Retracted, 24-3/4" extended
- 14-3/4" Mount height
- 6" Wheel
- Bolt-on mounting bracket fits up to 3" x 5" trailer frame
- All mounting hardware included
- Zinc finish

Part No.	Description	Capacity (lbs.)	Travel	Wind	Wt. (lbs.)	Cat.
0091610	Swing-Away Marine Jack	1,000	10"	Side	14.00	533 (N)

Tube Jack Swivel Mount



0091205

Part No.	Description	Capacity (lbs.)	Travel	Wind	Wt. (lbs.)	Cat.
0091205	Top Wind Swivel Jack	2,000	10"	Top	11.14	533 (N)
0091215	Top Wind Swivel Jack	2,000	15"	Top	14.22	533 (N)



Available in Retail Package

Jacks

Tube Jack w/Swivel Mount



Part No.	Description	Capacity (lbs.)	Travel	Wind	Wt. (lbs.)	Cat.
0091220	Side Wind Swivel Jack	5,000	10"	Side	13.26	533 (N)
3005528	Tube Trailer Jack Mounting Assembly				2.44	533 (N)

Bracket Jack w/Swivel Mount



Part No.	Description	Capacity (lbs.)	Travel	Wind	Wt. (lbs.)	Cat.
0091210	Top Wind Swivel Jack	2,000	10"	Top	11.82	533 (N)
0091225	Top Wind Swivel Jack	2,000	15"	Top	14.88	533 (N)
3005528	Tube Trailer Jack Mounting Assembly				2.44	533 (N)

Square Tube Jack



Part No.	Description	Capacity (lbs.)	Travel	Wind	Wt. (lbs.)	Cat.
0091310	2-1/2" Square Tube Jack, Top Wind	7,000	26"	Top	12.50	533 (N)
0091340	2-1/2" Square Tube Jack, Side Wind	7,000	26"	Side	12.50	533 (N)

A-Frame Jack



Part No.	Description	Capacity (lbs.)	Travel	Wind	Wt. (lbs.)	Cat.
0091260	A-Frame, Includes Support Foot	2,000	15"	Top	12.78	533 (N)
0091261	A-Frame, Jack Only	2,000	15"	Top	11.44	533 (N)
0091265	A-Frame, Includes Support Foot	5,000	15"	Top	12.84	533 (N)
0091266	A-Frame, Jack Only	5,000	15"	Top	11.44	533 (N)

Heavy-Duty Square Jack



0091410H

- 4" Square Jack
- Spring return w/ side pin
- Black powder coat finish

Part No.	Description	Capacity (lbs.)	Travel	Wind	Wt. (lbs.)	Cat.
0091410H	Side Pin Jack w/Handle	10,000 Dynamic*	12" screw travel w/14" adj.	Side	64.40	533 (N)
0091410	Side Pin Jack, less Handle	10,000 Dynamic*	12" screw travel w/14" adj.	Side	61.00	533 (N)
0091405H	Handle for 0091410 & 0091415	—	—	—	3.40	533 (N)

Replacement handles come with mounting hardware.

*12,000 lbs. Static

Heavy-Duty Square Jack



0091410H

- 4" Square Jack
- Spring return w/ side pin
- Black powder coat finish

Part No.	Description	Capacity (lbs.)	Travel	Wind	Wt. (lbs.)	Cat.
0091415H	Front Pin Jack w/Handle	10,000 Dynamic*	12" screw travel w/14" adj.	Side	64.40	533 (N)
0091415	Front Pin Jack, less Handle	10,000 Dynamic*	12" screw travel w/14" adj.	Side	61.00	533 (N)
0091405H	Handle for 0091410 & 0091415	—	—	—	3.40	533 (N)

Replacement handles come with mounting hardware.

*12,000 lbs. Static

Brake Controllers

2 Axle Brake Controller



- Time-based electronic trailer brake controller.
- Recommended for light-duty trailers with 2 or 4 electronic brakes.
- Quick connect wire plug.
- Safest time-based controller available.
- Includes mounting bracket and hardware
- 3-Year warranty.

Part No.	Description	Wt. (lbs.)	Cat.
 BC2A	2 Axle Brake Controller	0.6	542 (N)

3 Axle Proportional Brake Controller



- Proportional electronic trailer brake controller.
- Faster/smoother stopping performance.
- Recommended for medium/heavy-duty trailers with 2, 4 or 6 electronic trailer brakes.
- Quick connect wire plug.
- Automatic and manual trailer braking.
- Includes mounting bracket and hardware
- 5-Year warranty

Part No.	Description	Wt. (lbs.)	Cat.
 BC3AP	3 Axle Proportional Brake Controller	0.6	542 (N)

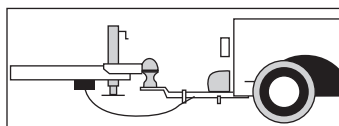
4 Axle Proportional Brake Controller, Digital



- Recommended for medium/heavy-duty trailers with 2, 4, 6 or 8 electronic brakes.
- Faster/smoother, proportional braking.
- Digital controller.
- Adjustable turn-on power.
- Built-in diagnostics display.
- Quick connect wire plug.
- Automatic and manual trailer braking.
- Includes mounting bracket and hardware
- Lifetime warranty

Part No.	Description	Wt. (lbs.)	Cat.
 BC4APD	4 Axle Proportional Brake Controller, Digital	0.7	542 (N)

Breakaway Switch Kit, 6-24 Volt











- 48" Plastic coated high-strength cable
- Zinc plated mounting bracket: bolt-on or weld-on
- 6-24 Volt
- Switch activates electric brakes if emergency cable pulls out
- Easy to use spring clip
- Not a substitute for safety chains
- Retail clamshell
- Compares to Redneck™* 2010 (420000), & Tekonsha™* Model 2010

Part No.	Description	Wt. (lbs.)	Cat.
5422010	Breakaway Switch, 12V w/ 48" Prewired Loop	0.41	542 (N)
5422012	Pin & Cable Replacement for 5422010 Breakaway Switch	0.10	542 (N)

Brake Control Wiring Harness

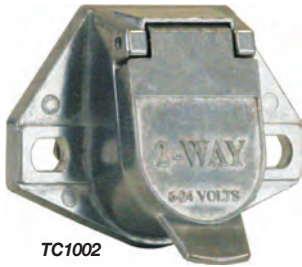


- Electric brake controller wiring connector for vehicles with factory tow package wiring.
- Simple plug-in installation, eliminates errors
- No cutting, splicing or taping.
- Simple quik connect 3' leads, saves on installation time
- Fits Dodge, Ford, Chevy/GMC

Part No.	Description	Wt. (lbs.)	Cat.
 BCHD	Brake Control Wiring Harness, Dodge/RAM Various Models ('95-'11)*	0.25	542 (N)
 BCHD1	Brake Control Wiring Harness, Dodge/RAM Various Models ('11-'16)*	0.25	542 (N)
 BCHD2	Brake Control Wiring Harness, Dodge/RAM 1500, 2500, 3500 ('13-'14)*	0.25	542 (N)
 BCHF	Brake Control Wiring Harness, Ford/Lincoln/Mercury Various Models ('92-'15)*	0.25	542 (N)
 BCHF1	Brake Control Wiring Harness, Ford Super Duty, E-350, E-450, F-250, F-350, F-450, F-550 ('05-'07)	0.35	542 (N)
 BCHF2	Brake Control Wiring Harness, Ford/Lincoln/Mercury Various Models ('08-'16)*	0.25	542 (N)
 BCHGM03	Brake Control Wiring Harness, Chevy/GMC Various Models ('02-'07)*	0.25	542 (N)
 BCHGM04	Brake Control Wiring Harness, Chevy/GMC Various Models ('14-'16)*	0.25	542 (N)

*See buyersproducts.com for complete application guide

2-Way Zinc Trailer Connector



- **TC1002** (truck end) **TC2002** (trailer end)
- Die-cast metal
- Round pins, split brass formed for positive contact
- Floating male pins for easy hook-up

TC1002

Part No.	Description	Wt. (lbs.)	Cat.
TC1002	2-Way Truck End Trailer Connector, Horizontal Pin Arrangement, Die-Cast	0.74	542 (N)
TC1012	2-Way Truck End Trailer Connector, Vertical Pin Arrangement, Die-Cast	0.68	542 (N)

2-Way Zinc Trailer Connector



TC2002

- **TC1002** (truck end) **TC2002** (trailer end)
- Die-cast metal
- Round pins, split brass formed for positive contact
- Floating male pins for easy hook-up

Part No.	Description	Wt. (lbs.)	Cat.
TC2002	2-Way Trailer End Connector w/Spring, Horizontal Pin Arrangement, Die-Cast	0.68	542 (N)
TC2012	2-Way Trailer End Connector w/Spring, Vertical Pin Arrangement, Die-Cast	0.79	542 (N)

4-Way Metal Trailer Connector



- **TC1004** (truck end) **TC2004** (trailer end)
- Die-cast metal
- Round pins, split brass formed for positive contact
- Floating male pins for easy hook-up

Part No.	Description	Wt. (lbs.)	Cat.
TC1004	4-Way Truck End Trailer Connector, Metal (round)	0.33	542 (N)

4-Way Metal Trailer Connector



- **TC1004** (truck end) **TC2004** (trailer end)
- Die-cast metal
- Round pins, split brass formed for positive contact
- Floating male pins for easy hook-up

Part No.	Description	Wt. (lbs.)	Cat.
TC2004	4-Way Trailer End Connector, Metal (round)	0.16	542 (N)

6-Way Trailer Connector



- **TC1006** (truck end) **TC2006** (trailer end) **TC2061** (trailer end)
- Die-cast metal
- Round pins, split brass formed for positive contact
- Floating male pins for easy hook-up
- Cable cover spring (TC2061)

Part No.	Description	Wt. (lbs.)	Cat.
TC1006	6-Way Truck End Trailer Connector, Metal (round)	0.34	542 (N)

6-Way Trailer Connector



TC2006

- **TC1006** (truck end) **TC2006** (trailer end) **TC2061** (trailer end)
- Die-cast metal
- Round pins, split brass formed for positive contact
- Floating male pins for easy hook-up
- Cable cover spring (TC2061)

Part No.	Description	Wt. (lbs.)	Cat.
TC2006	6-Way Trailer End Connector, Metal (round)	0.16	542 (N)
TC2061	6-Way Trailer End Connector, w/ Spring Metal (round)	0.35	542 (N)

7-Way Plastic Trailer Connector



- **TC1007P** (truck end) **TC2007P** (trailer end)
- Plastic 7 flat pins (RV-type)
- Plastic inserts keep out dirt and moisture
- Built-in safety latch prevents damage from accidental drive-away

Part No.	Description	Wt. (lbs.)	Cat.
TC1007P	7-Way Truck End Trailer Connector, Plastic (flat)	0.27	542 (N)

7-Way Plastic Trailer Connector



- **TC1007P** (truck end) **TC2007P** (trailer end)
- Plastic 7 flat pins (RV-type)
- Plastic inserts keep out dirt and moisture
- Built-in safety latch prevents damage from accidental drive-away

Part No.	Description	Wt. (lbs.)	Cat.
TC2007P	7-Way Trailer End Connector, Plastic (flat)	0.19	542 (N)



Trailer Connectors

7-Way Metal Trailer Connector



- **TC1007** (truck end) **TC2007** (trailer end)
- Die-cast metal, round pins
- Self-cleaning pressure contacts
- Plated contacts for ultimate weather and corrosion protection
- Built-in safety latch prevents damage from accidental drive-away
- Stainless steel weather cover spring
- Color-coded terminals to RVI standards for proper hook-up

Part No.	Description	Wt. (lbs.)	Cat.
TC1007	7-Way Truck End Trailer Connector, Metal (round)	0.63	542 (N)

7-Way Metal Trailer Connector



- **TC1007** (truck end) **TC2007** (trailer end)
- Die-cast metal, round pins
- Self-cleaning pressure contacts
- Plated contacts for ultimate weather and corrosion protection
- Built-in safety latch prevents damage from accidental drive-away
- Stainless steel weather cover spring
- Color-coded terminals to RVI standards for proper hook-up

Part No.	Description	Wt. (lbs.)	Cat.
TC2007	7-Way Trailer End Connector, Metal (round)	0.75	542 (N)

7-Way Zinc Trailer Connector



- Zinc
- Flat Pins

Part No.	Description	Wt. (lbs.)	Cat.
TC1007Z	7-Way Truck End Trailer Connector, Zinc (flat)	0.49	542 (N)

7-Way Zinc Trailer Connector



- Zinc
- Flat Pins

Part No.	Description	Wt. (lbs.)	Cat.
TC2007Z	7-Way Trailer End Connector, Zinc (flat)	0.27	542 (N)

6-Way Round to 7-Way Flat RV Adapter



- Prewired, 8"
- Compares to: Brophy™* #CRR67F & Pollak™* #12-725EP

Part No.	Description	Wt. (lbs.)	Cat.
TC1067P	6-Way Round to 7-Pin Flat RV Adapter	0.80	542 (N)

7-Way Flat RV Trailer End with 96" Prewired Cable





- 7-Way Wire:
 - (2) 10 Gauge Wires: Black & White
 - (1) 12 Gauge Wire: Blue
 - (4) 14 Gauge Wires: Brown, Green, Red, Yellow
- Terminated to TC2007P molded connector

Part No.	Description	Wt. (lbs.)	Cat.
TC2967P	7-Way Flat RV Trailer End with 96" Prewired Cable	2.35	542 (N)

7-Way Trailer Connector



- Flat pins
- Plastic housing
- OEM style rear connector
- Built-in connection latch

Part No.	Description	Wt. (lbs.)	Cat.
 TC1770P	7-Way Truck Receptacle	0.31	542 (N)
TC1770B	Bulk TC1770P w/o retail box	0.31	542 (N)
 TC1771P	7-Way Truck Receptacle w/Twist Lock	0.33	542 (N)

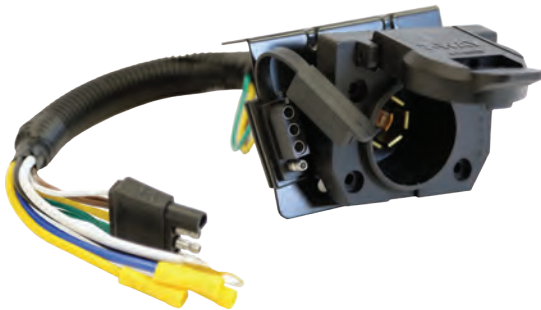
10 ft Trailer Connector



- OEM harness
- 10 feet
- Vehicle End

Part No.	Description	Wt. (lbs.)	Cat.
TC1772P	5th Wheel & Gooseneck Wiring Harness	2.88	542 (N)

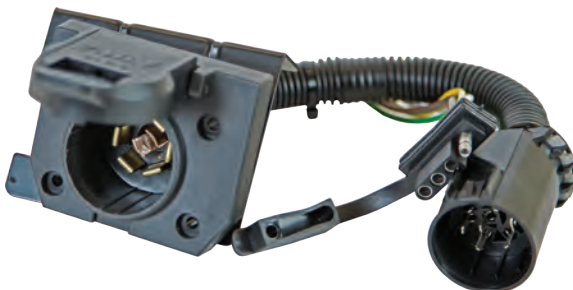
7-Way Dual-Plug Trailer Connector



- 7-way flat and 4 flat connections
- Prewired 10", 4 flat & pigtail ends
- Plastic housing
- Built-in connection latch
- RVI color-coded wiring terminals
- Mounting bracket and hardware included

Part No.	Description	Wt. (lbs.)	Cat.
 TC1474P	7-Way Dual-Plug Trailer Connector, 10" prewire - 4 flat	1.15	542 (N)

7-Way Dual-Plug Trailer Connector



- 7-way flat and 4 flat connections
- Prewired 8" OEM style rear connector
- Plastic housing
- Built-in connection latch
- Mounting bracket and hardware included

Part No.	Description	Wt. (lbs.)	Cat.
 TC1774P	7-Way Dual-Plug Trailer Connector, 8" prewire - OEM	1.15	542 (N)



Available in Retail Package

Trailer Connector Adapters

6-Way to 4-Way Trailer Connector Adapter



Front



Rear

Part No.	Description	Wt. (lbs.)	Cat.
TC2064P	6-Way Round to 4-Way Round Adapter, Plastic	0.22	542 (N)

7-Way to 4-Way Trailer Connector Adapter



Front



Rear

Part No.	Description	Wt. (lbs.)	Cat.
TC2074P	7-Way Flat to 4-Way Flat Adapter, Plastic	0.18	542 (N)

7-Way to 4-Way Trailer Connector Adapter



Front



Rear

Part No.	Description	Wt. (lbs.)	Cat.
TC2074T	7-Way Flat to Flat Adapter w/Dust Cap, Plastic, LED Tester	0.55	542 (N)

7-Way to 5-Way Trailer Connector Adapter



Front



Rear

Part No.	Description	Wt. (lbs.)	Cat.
TC2075P	7-Way Flat to 5-Way Round Adapter, Plastic	0.22	542 (N)

7-Way to 6-Way Trailer Connector Adapter



Part No.	Description	Wt. (lbs.)	Cat.
TC2076P	7-Way Flat to 6-Way Round Adapter, Plastic (center pin auxiliary power)	0.22	542 (N)

7-Way to 6-Way Trailer Connector Adapter



Part No.	Description	Wt. (lbs.)	Cat.
TC2076T	7-Way Flat to 5-Flat Adapter w/Dust Cap, Plastic, Built-in Connection Latch, LED Tester	0.57	542 (N)

7-Way to 7-Way Trailer Connector Adapter



Part No.	Description	Wt. (lbs.)	Cat.
TC1077P	7-Way Round to 7-Way Flat, Plastic, Prewired 3" connection, Built-in Connection Latch	0.80	542 (N)

Trailer Connector Bracket



Part No.	Description	Wt. (lbs.)	Cat.
TC107	7-Way (Flat) Trailer Connector Bracket, Zinc	0.15	542 (N)



Trailer Connector Brackets, Accessories, & Tail Light Convertors

Trailer Connector Bracket



Part No.	Description	Wt. (lbs.)	Cat.
TC1456	4-5-6 Way Trailer Connector Bracket, Zinc	0.20	542 (N)

Trailer Connector Rubber Boot



Part No.	Description	Wt. (lbs.)	Cat.
TC1046B	Rubber Boot, fits 4-5-6 Way Connectors	0.10	542 (N)

Trailer Connector Rubber Boot



Part No.	Description	Wt. (lbs.)	Cat.
TC1007B	Rubber Boot, fits 7-Way Connectors	0.10	542 (N)

Vehicle Side Replacement Cable



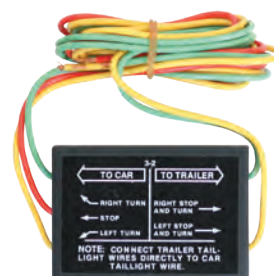
Part No.	Description	Wt. (lbs.)	Cat.
TC1242	4-Flat Vehicle Side Replacement Cable w/Dust Cap, Prewired 48" cable,	0.19	542 (N)

Prewired Loop



Part No.	Description	Wt. (lbs.)	Cat.
TC1244	4-Way Flat w/Cap, 48" Prewired Loop	0.25	542 (N)

Heavy-Duty Tail Light Convertor



Part No.	Description	Wt. (lbs.)	Cat.
 5423203	Heavy-Duty (6 Amp) 3-2 Solid State Tail Light Converter	0.41	542 (N)

Breakaway Switch



Part No.	Description	Wt. (lbs.)	Cat.
 5422010	Break-Away Switch, Bolt or Weld-On, 48" Plastic Coated High-Strength Cable	0.41	542 (N)

Pin & Cable Replacement for Breakaway



Part No.	Description	Wt. (lbs.)	Cat.
5422012	Pin & Cable Replacement, used w/5422010	0.10	542 (N)

The Buyers family of manufacturing companies

Tracom

VIKING FORGE

 **Romotech**
Rotational Molding Technologies, Inc.

 **Boomerang**
RUBBER, INC.


PROGRESSIVE
POWDER COATING, INC.